



PHILANIE JOOSTE

STILL WATERS RUN DEEP

SOLO EXHIBITION
10.03.23 - 12.04.23

LIZAMORE
& Associates

CONTEMPORARY ART GALLERY AND CONSULTANCY

Philianie Jooste's subject matter has always been people. Although she is fascinated by what people show the world, she is equally interested in what they hide.

Photo albums of a deceased godmother and grandmother served as source material for these figurative paintings in bitumen and oil for her solo exhibition ***Still Waters Run Deep***. The fleeting, carefree moments of childhood and youth stand in stark contrast to a viscous medium known for its waterproofing and adhesive properties. Although the undercurrents of growing up in a family tormented by addiction and mental illness are not visible on the surface, like bitumen, the damage leaves a permanent mark.

Jooste enrolled for a BA in Fine Arts at the University of Pretoria in 1993 but decided to pursue her other passion – words – by serving as both news and article editor at the student newspaper, ***Die Perdeby***, and completing an honours degree in publishing. This was followed by a two-year adventure in Edinburgh.

After returning from Scotland, she worked for a newspaper, a book distribution company, an educational NGO and a small publisher, before starting her own publishing business in 2013. She worked alongside Hermann Niebuhr at his Lillian Road Studio in Fordsburg between 2017 and 2019. This was where she was introduced to bitumen as a medium. She started mixing oil with bitumen on canvas in her final year with Hermann.

Jooste participated in a group exhibition with fellow studio artists at the Lillian Road Studio in 2019 and has since taken part in nine group exhibitions.

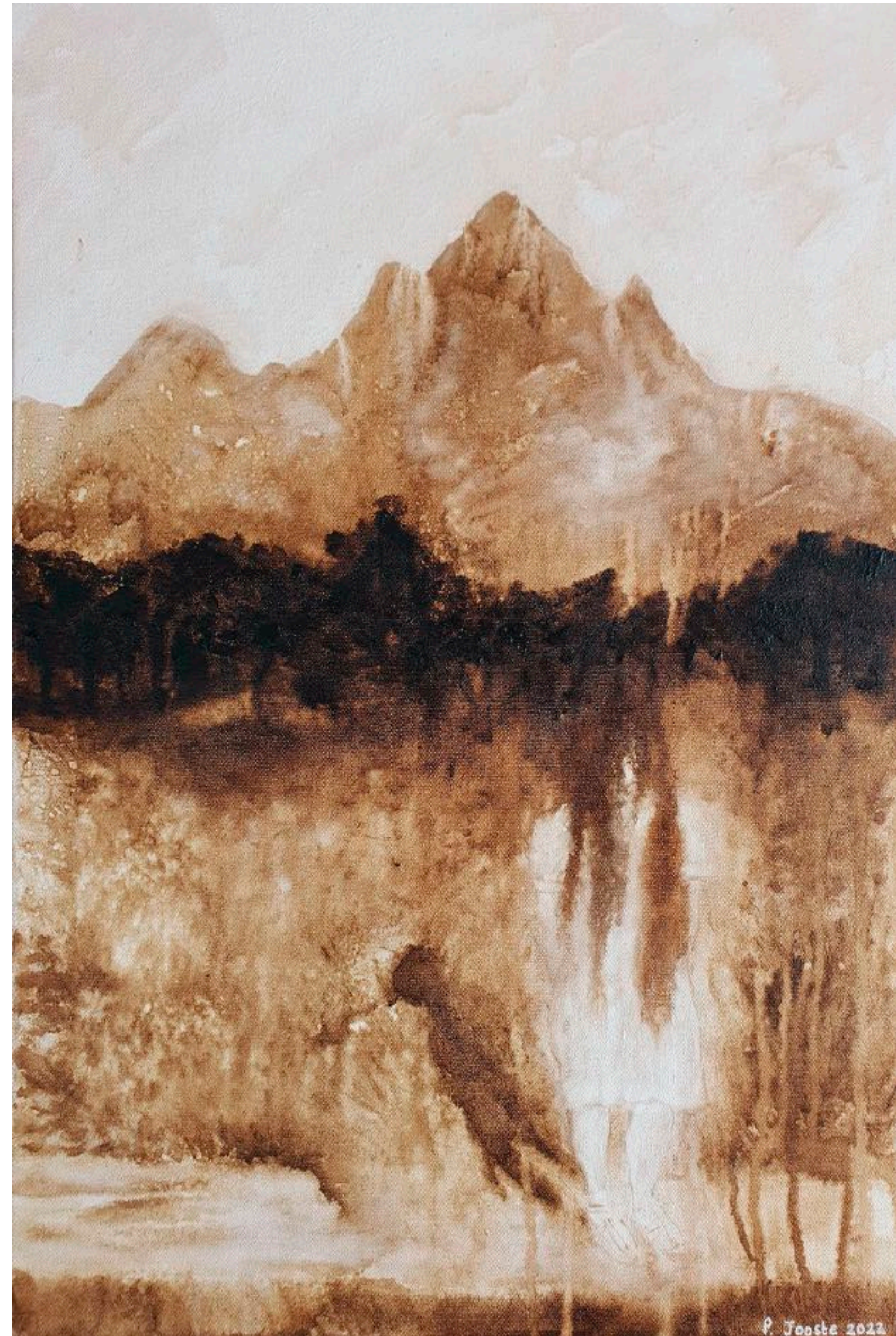
Disappear into thin air

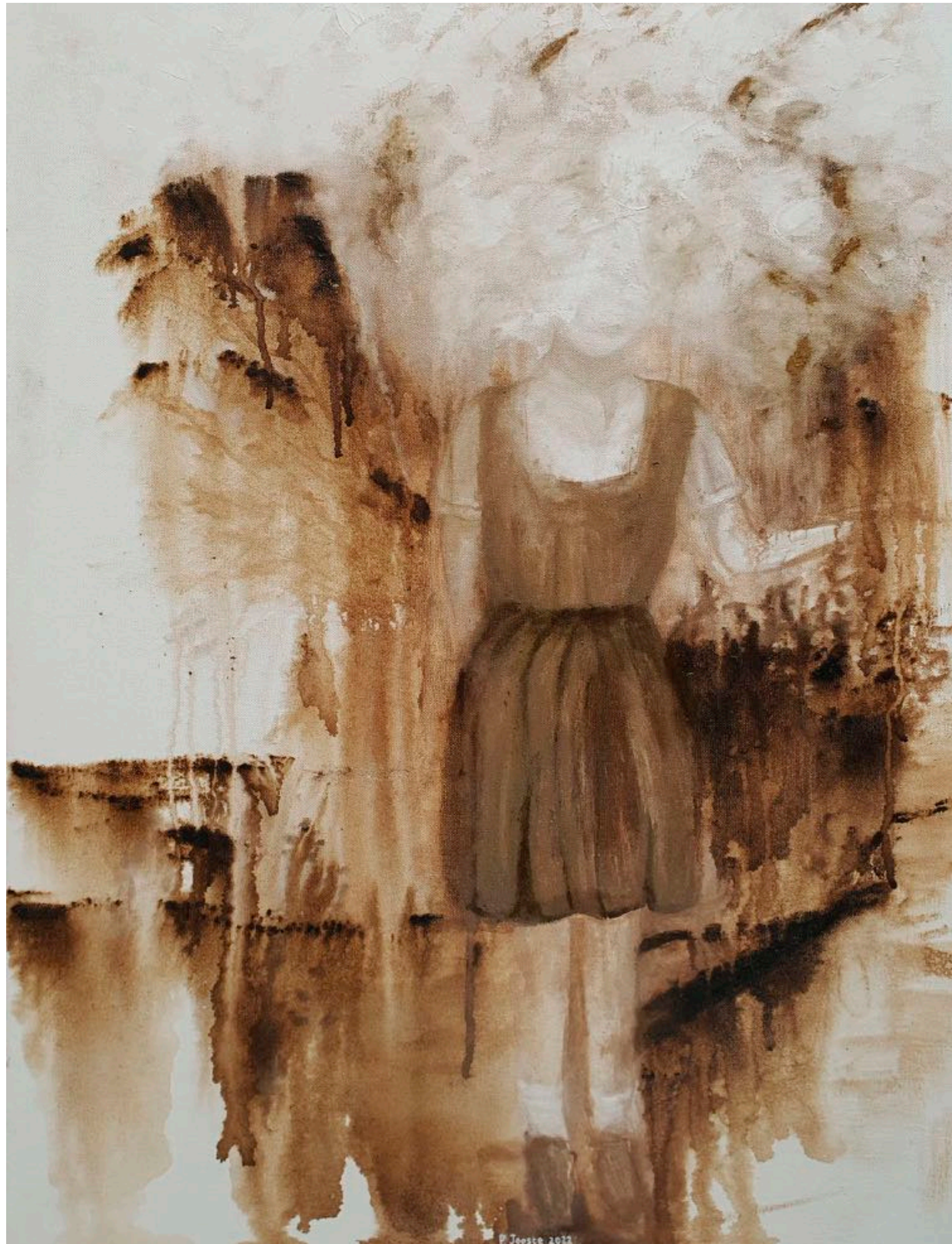
2022

Bitumen and oil on canvas

60cm x 40cm

R 9 600-00



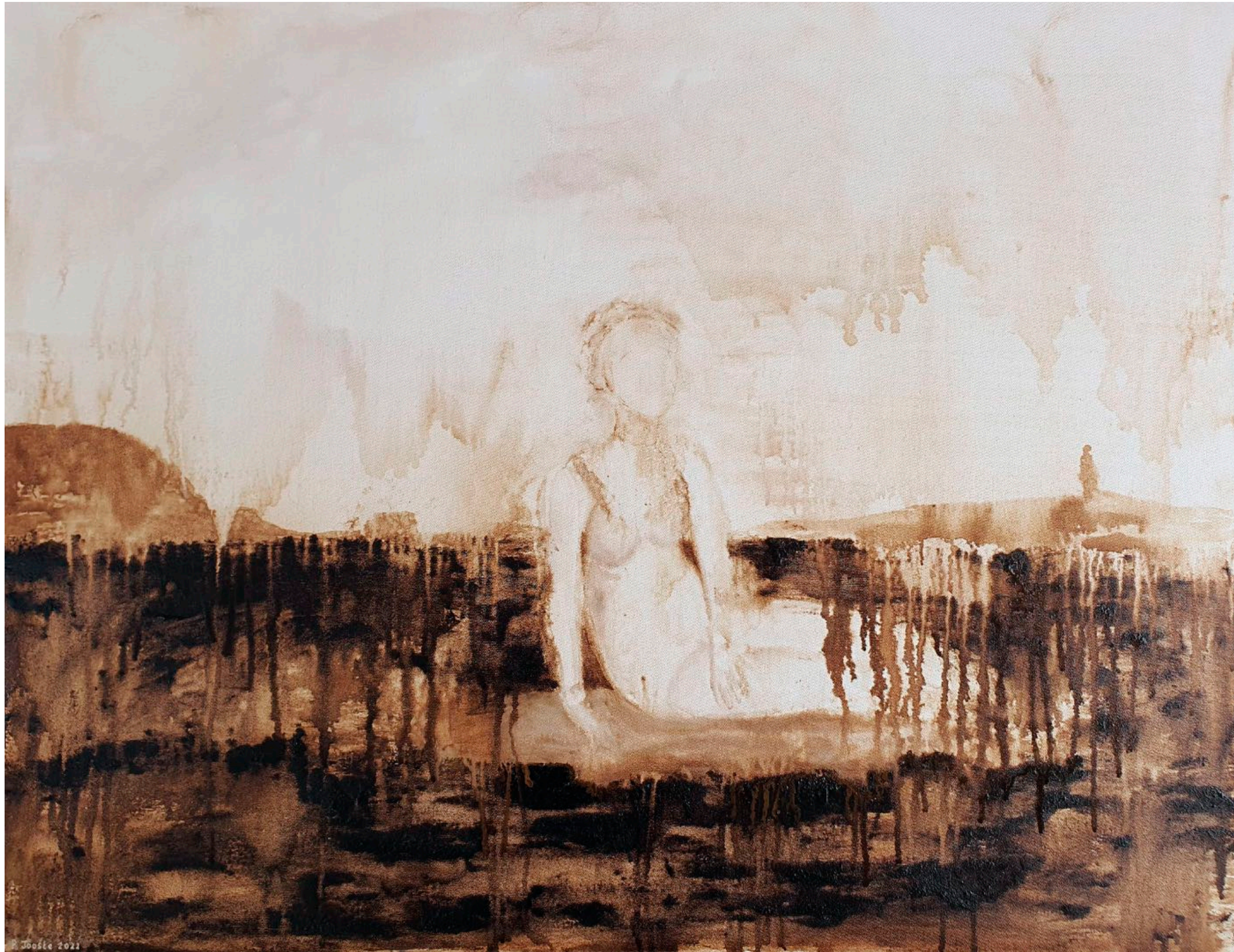


Head in the clouds

2022

Bitumen and oil on canvas
80cm x 60cm

R 10 925-00



Still waters run deep

2022

Bitumen and oil on canvas
70cm x 90cm

R 11 900-00

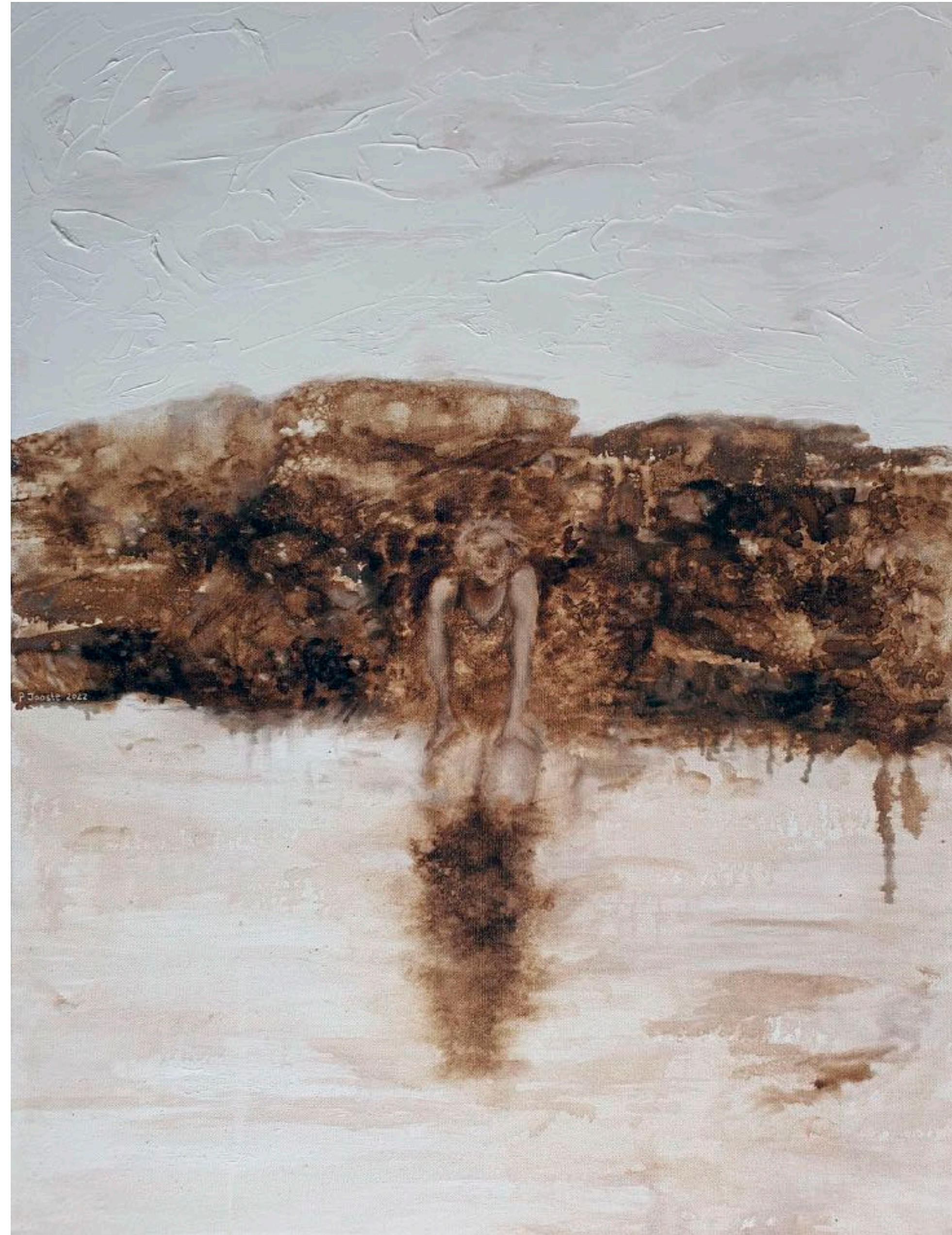
Troubled water

2022

Bitumen and oil on canvas

80cm x 60cm

R 10 925-00





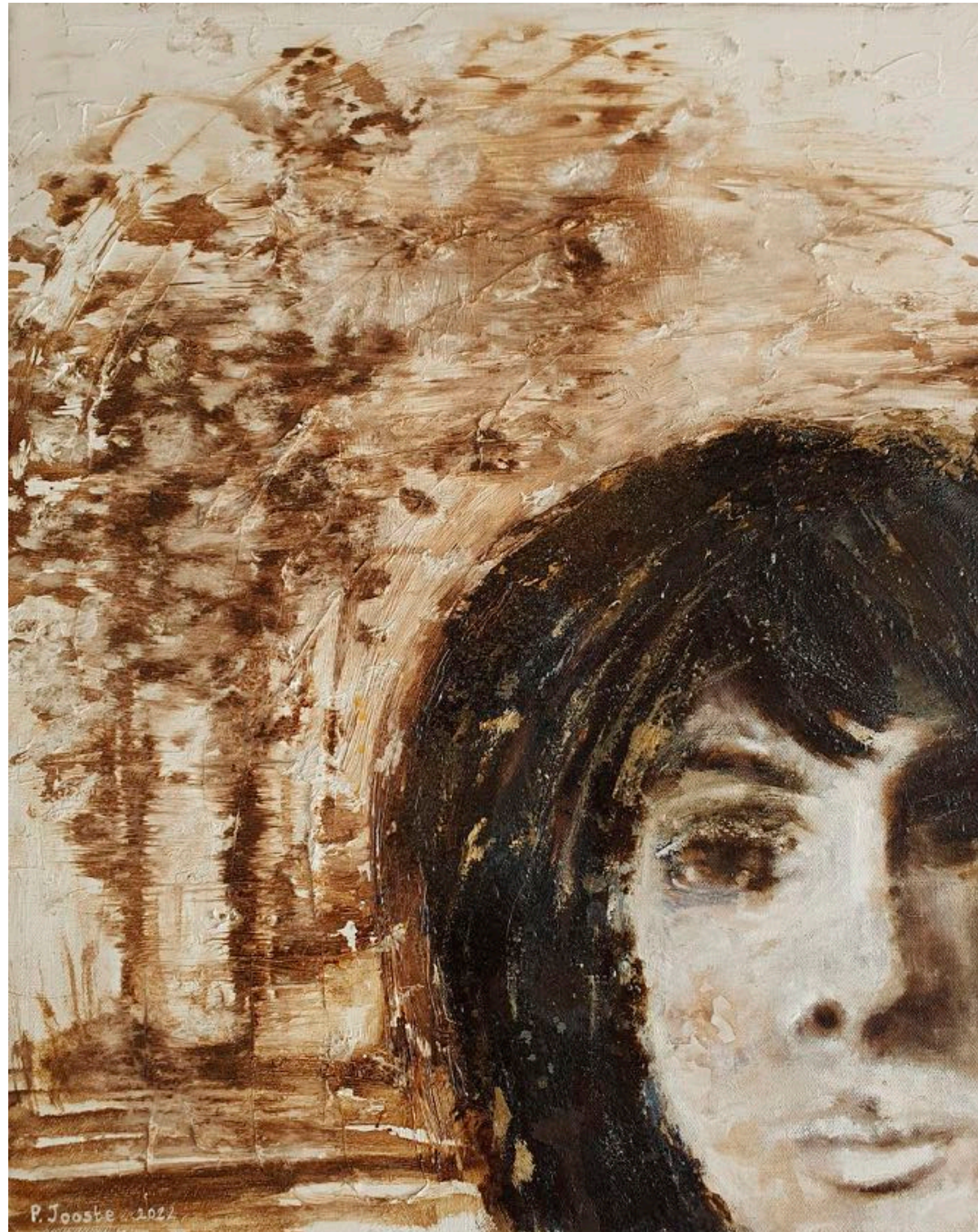
Black sheep

2022

Bitumen and oil on canvas

80cm x 60cm

R 10 925-00



The forest

2022

Bitumen and oil on canvas
50cm x 40cm

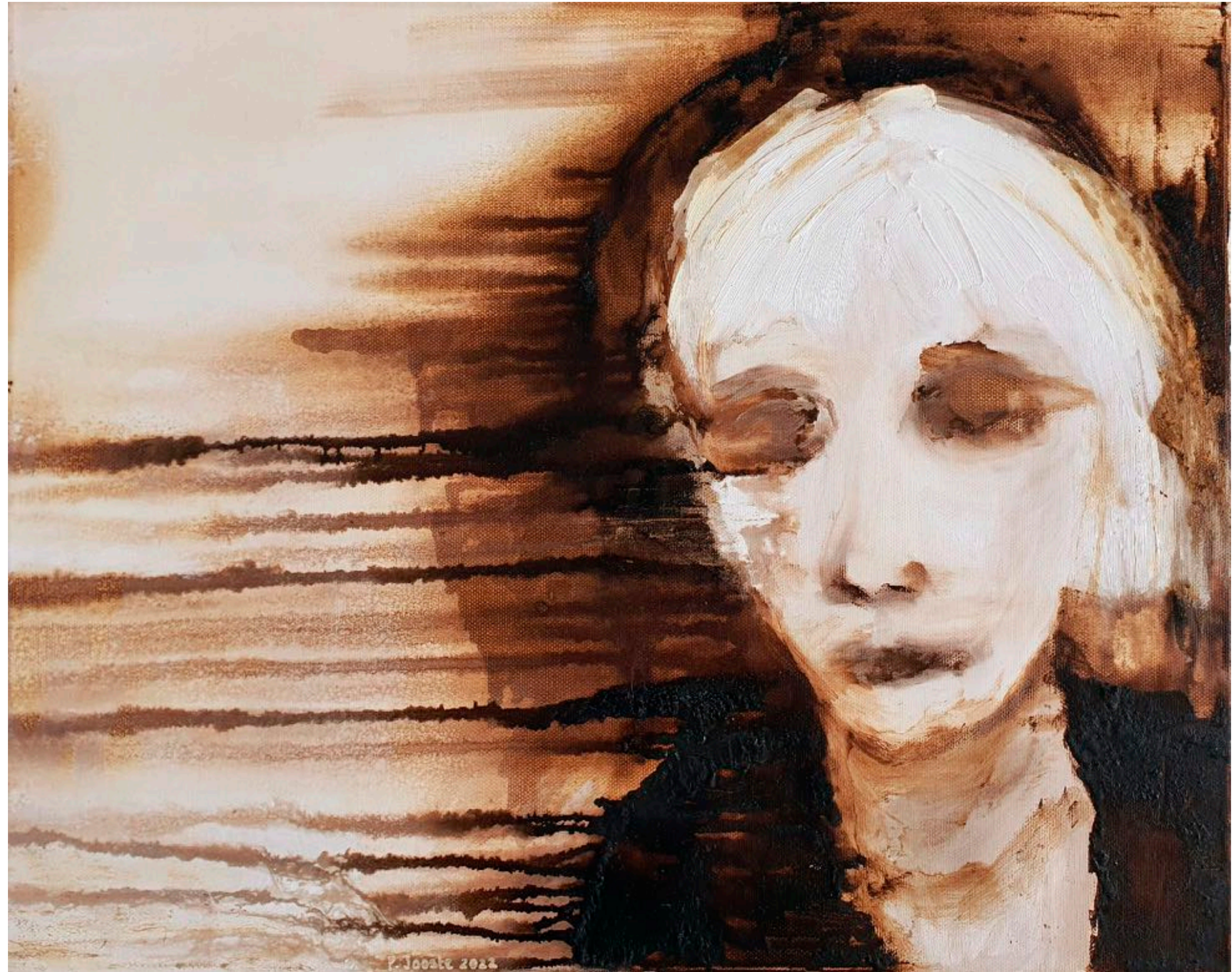
R 7 700-00

The tears

2022

Bitumen and oil on canvas
45cm x 60cm (framed)

R 8 500-00



The flood

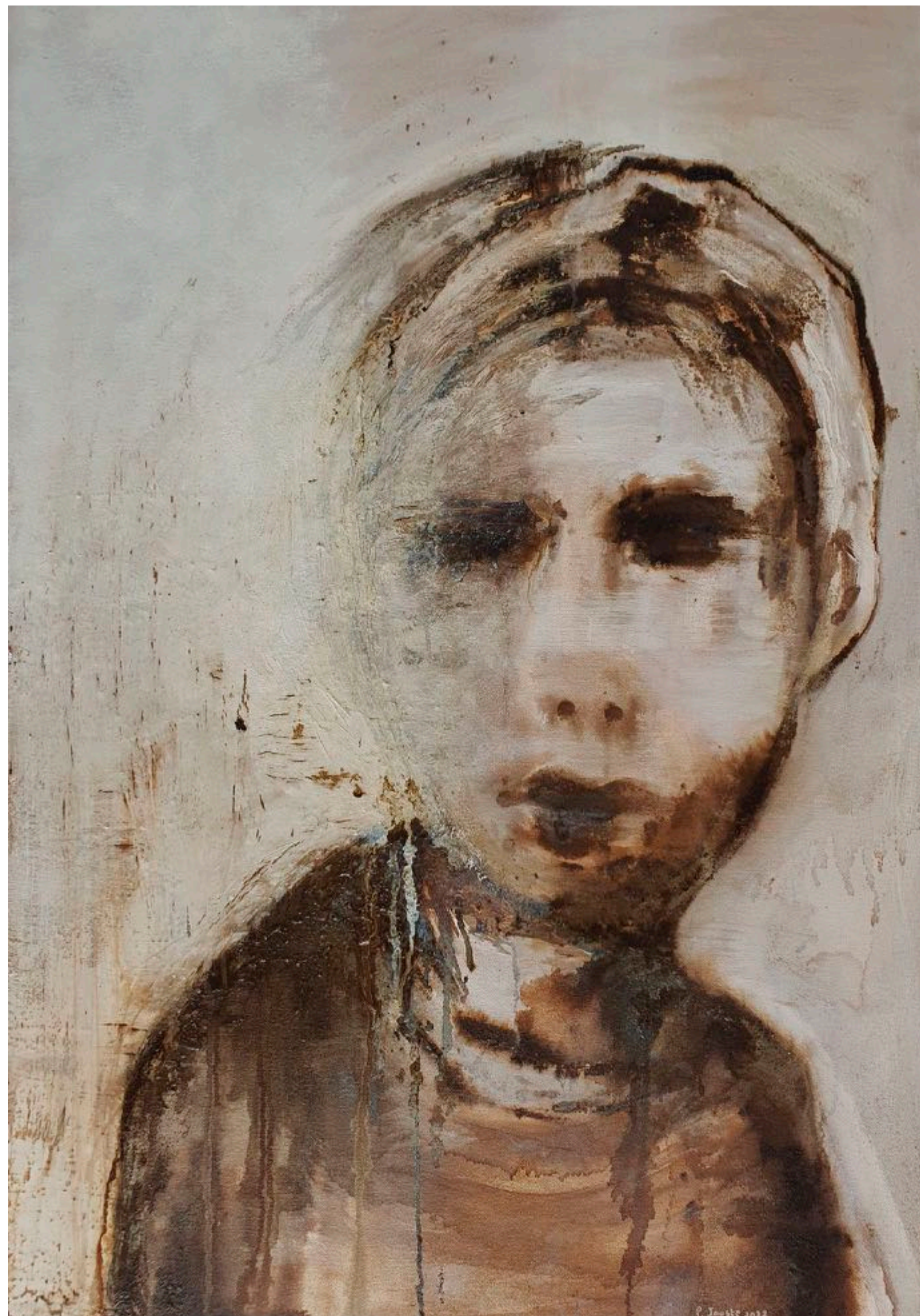
2022

Bitumen and oil on canvas

42cm x 30cm

R 4 800-00





The light

2022

Bitumen and oil on canvas
89cm x 64cm (framed)

R 12 200-00

The stare

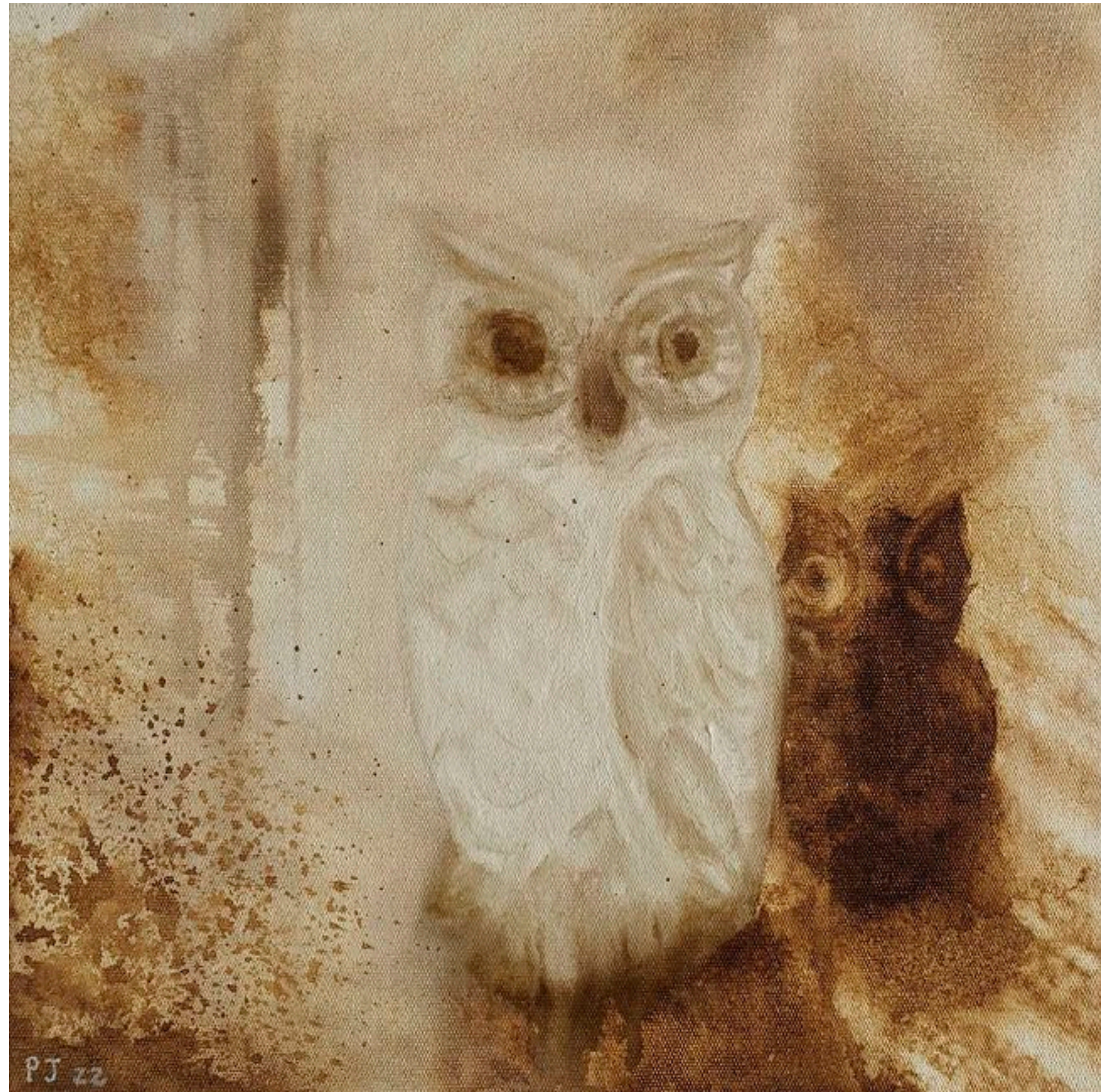
2022

Bitumen and oil on canvas

61cm x 50cm

R 9 000-00





The owl

2022

Bitumen and oil on canvas
30cm x 30cm

R 4 450-00

The pineapple vase

2022

Bitumen and oil on canvas

30cm x 30cm

R 4 450-00





The ship

2022
Bitumen and oil on canvas
30cm x 30cm

R 4 450-00

Life slipping through her fingers

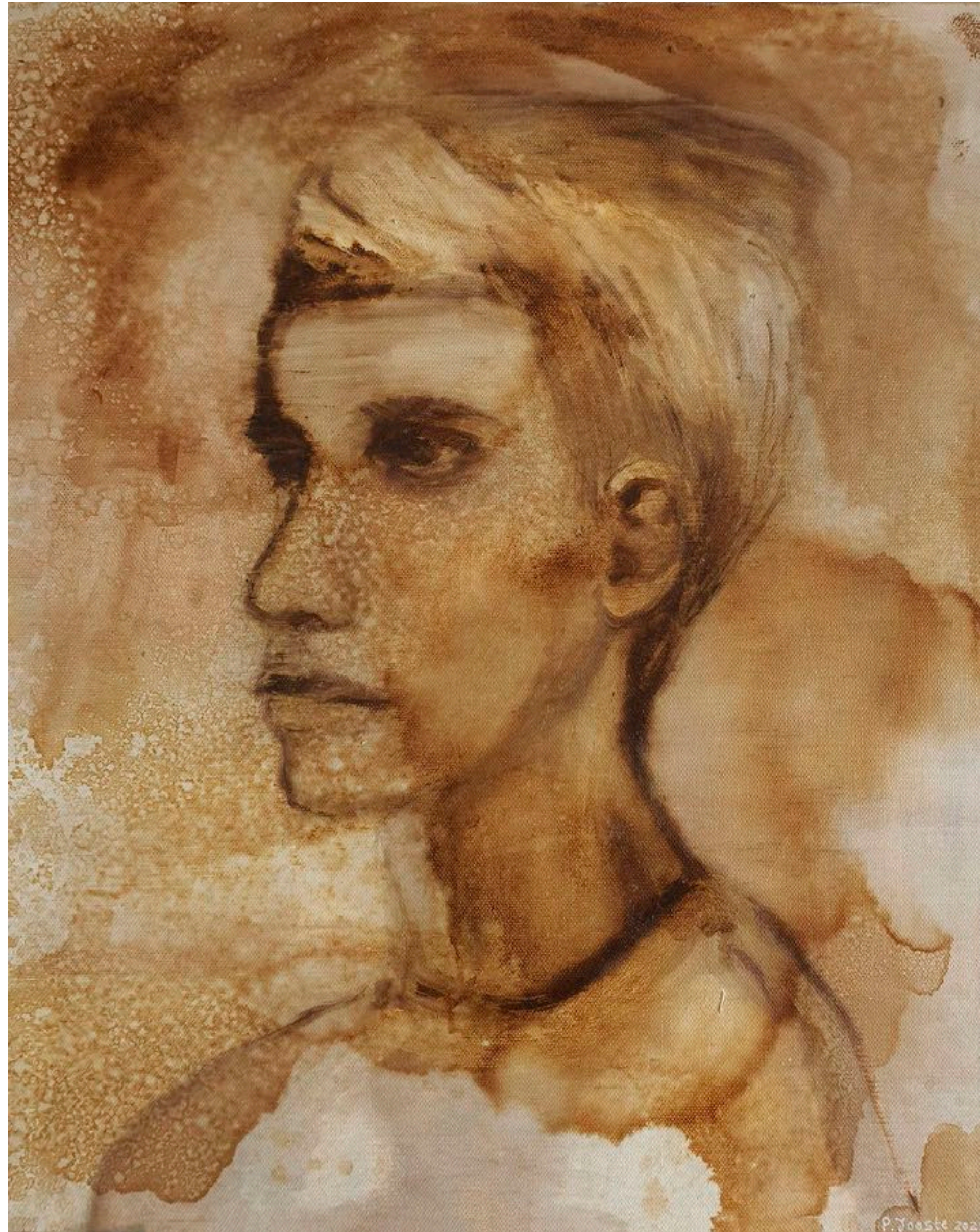
2020

Bitumen and oil on canvas

95cm x 64cm (framed)

R 12 900-00





The boyfriend

2021

Bitumen and oil on canvas

51.5cm x 41.5cm

R 7 700-00

The window

2021

Bitumen and oil on canvas

61cm x 45cm

R 8 650-00





Break of day

2021

Bitumen and oil on canvas

31cm x 51cm

R 6 200-00

The godchild

2021

Bitumen and oil on canvas

30cm x 20cm

R 3 500-00



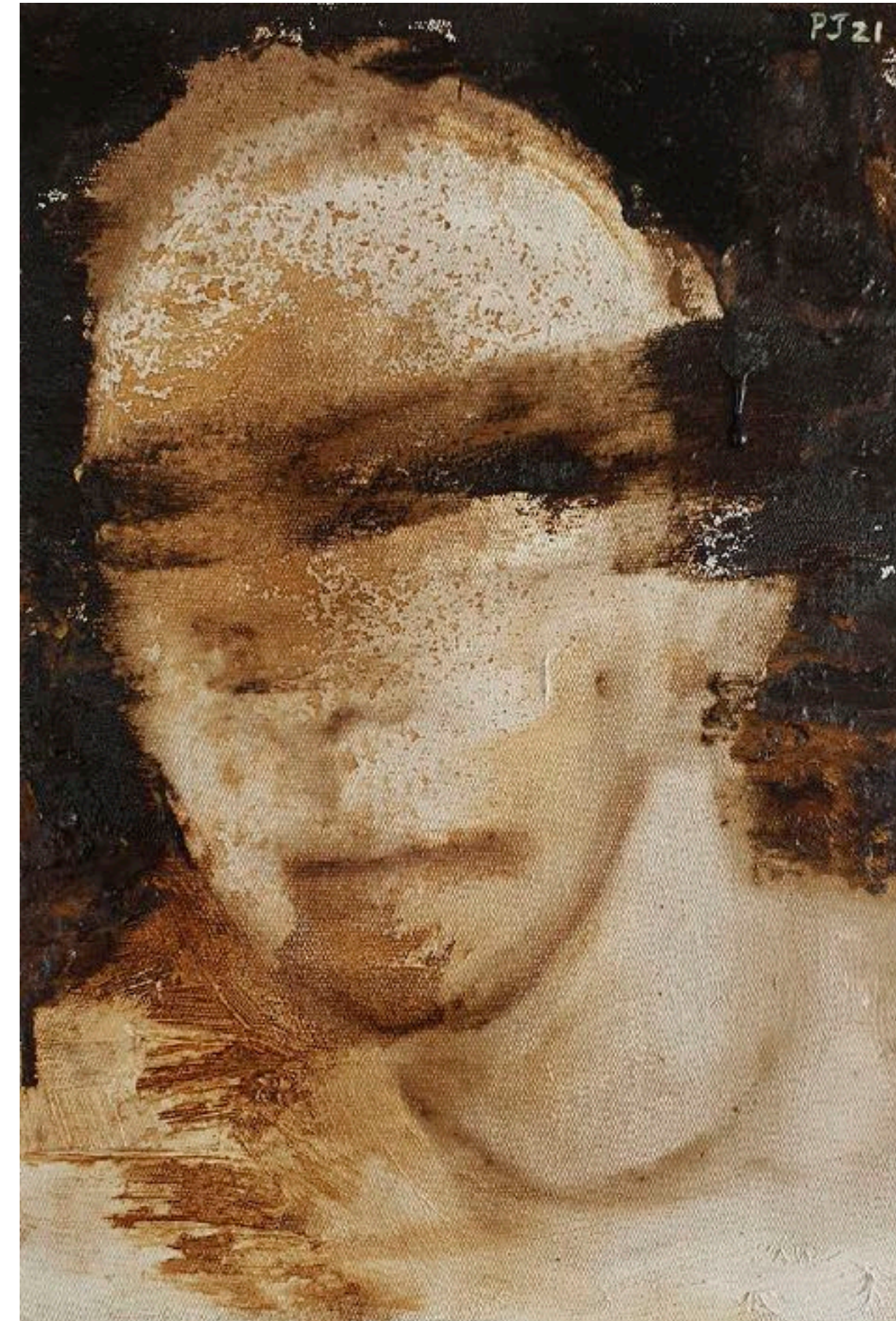
The friend

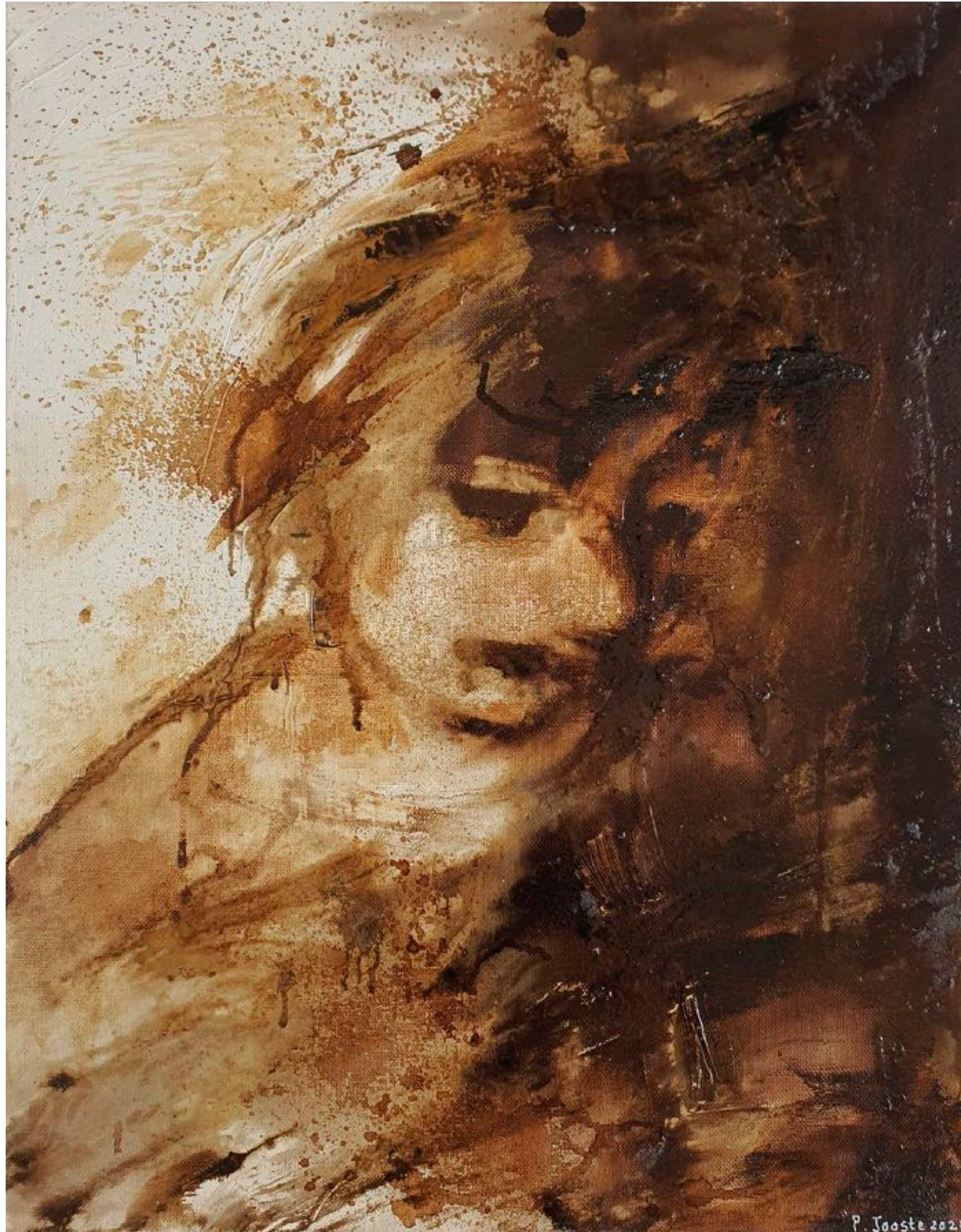
2021

Bitumen and oil on canvas

30cm x 20cm

R 3 500-00





Crumbling

2021

Bitumen and oil on canvas

51cm x 40cm

R 7 700-00

LIZAMORE

& Associates

CONTEMPORARY ART GALLERY AND CONSULTANCY

Contact Teresa at teresa@lizamore.co.za for more information.