

# AnAtomic II

---

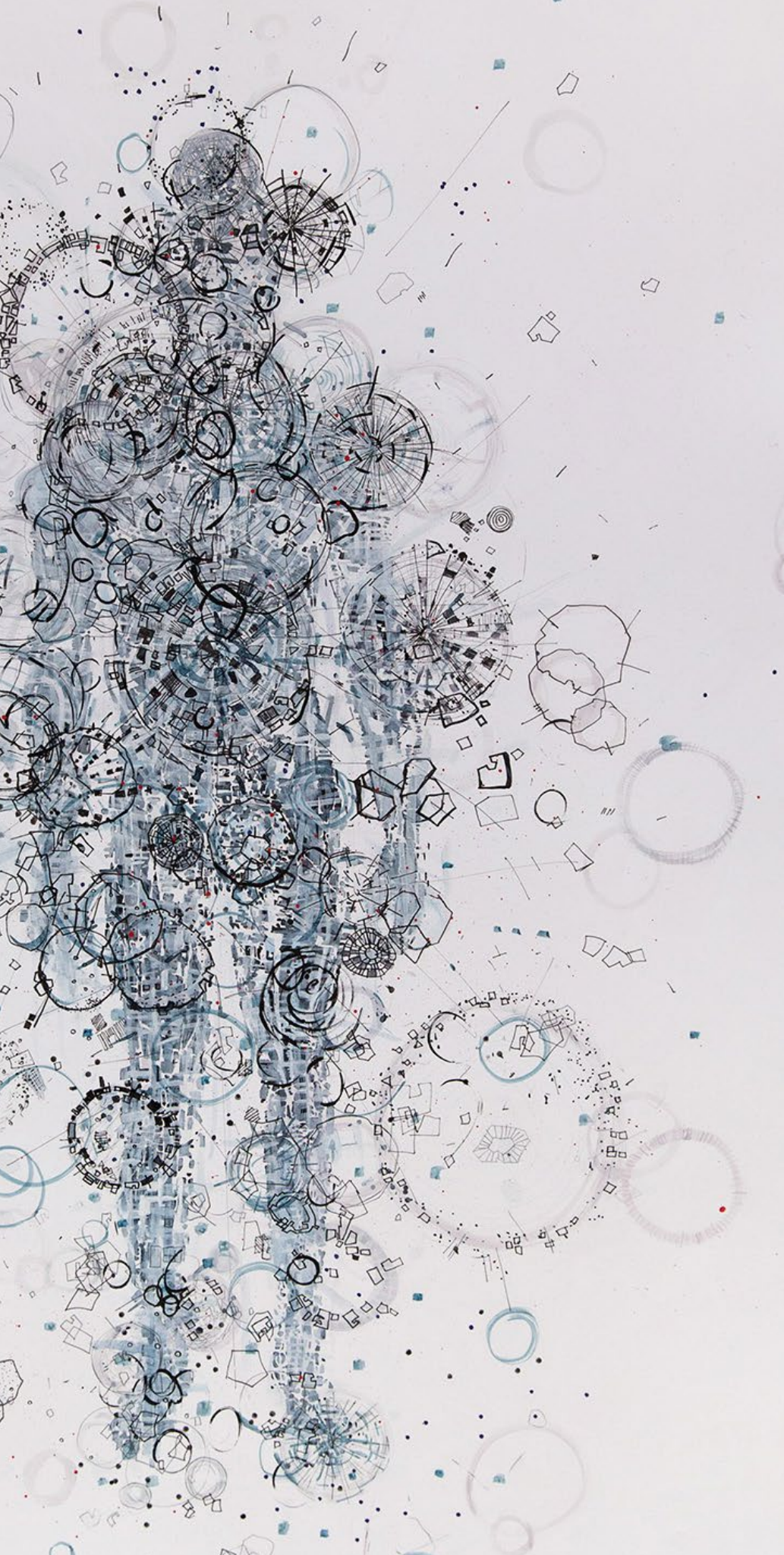
Lehlogonolo Mashaba

01.06.17 - 24.06.17

LIZAMORE  
& Associates







## MASHABA EXPLORES THE FRAGILITIES OF HUMAN EXISTENCE

AnAtomic II continues Mashaba's investigation of the relation of human anatomy and atoms. Through the use of atoms and abstract forms, the artist feeds his desire to draw parallels between the building blocks which make up human existence. The body of work, comprising of figurative and abstract drawings, prints and paper cut-out assemblages, explores the multi-connectivity of sentient life as a theme. Mashaba's distinctive and delicate use of sparsely populated areas is juxtaposed with explosive mark makings of atoms and other abstract forms. The artist intentionally incorporates abstract forms, that are delicately handled in a similar fashion as Mashaba's figures, as a reference to the fragility of the human condition. With this body of work, Mashaba shifts towards more abstract visuals that are used as visual metaphors for the construction of human existence. The detailing in Mashaba's abstract forms cues many rhetorical questioning of the vastness of life on a universal plane. "These layered works could lead to a play with an alternate reading of an understanding of life," Mashaba says. In AnAtomic II, Mashaba comfortably transitions between science fiction and fact, as he gives the viewer a playful space to re-imagine human existence whilst incorporating factual visual references like cells, atoms and molecules.

Nolan Stevens, 2017





Origins IV invert | Silkscreen | 100 x 70 cm | Monoprint | R 19 600 (Framed)

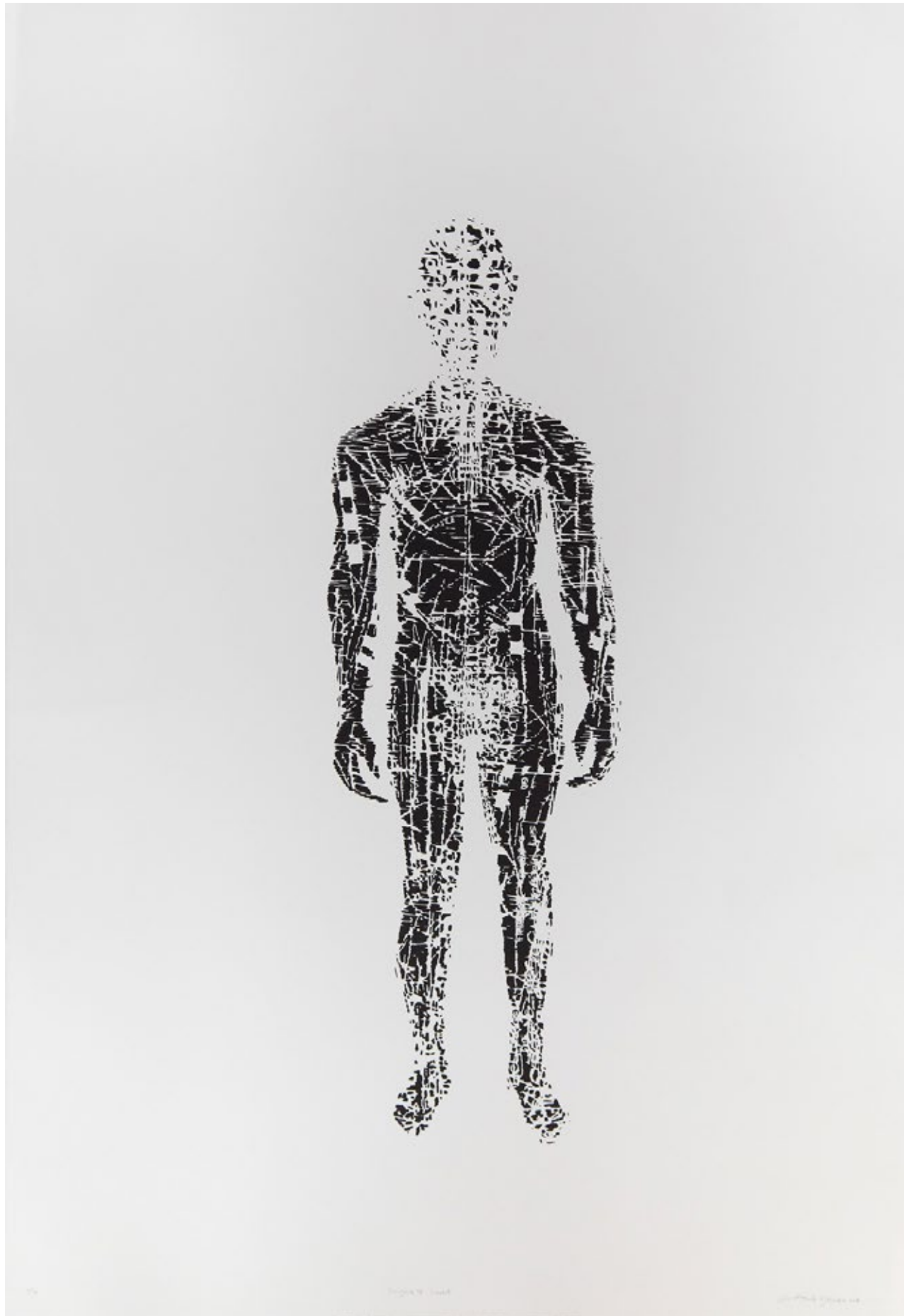


Veins study II | Silkscreen | 100 x 70 cm | State proof 1/1 | R 11 025 (Framed)





Veins study II | Silkscreen | 100 x 70 cm | Edition of 16 | R 11 025 (Framed)

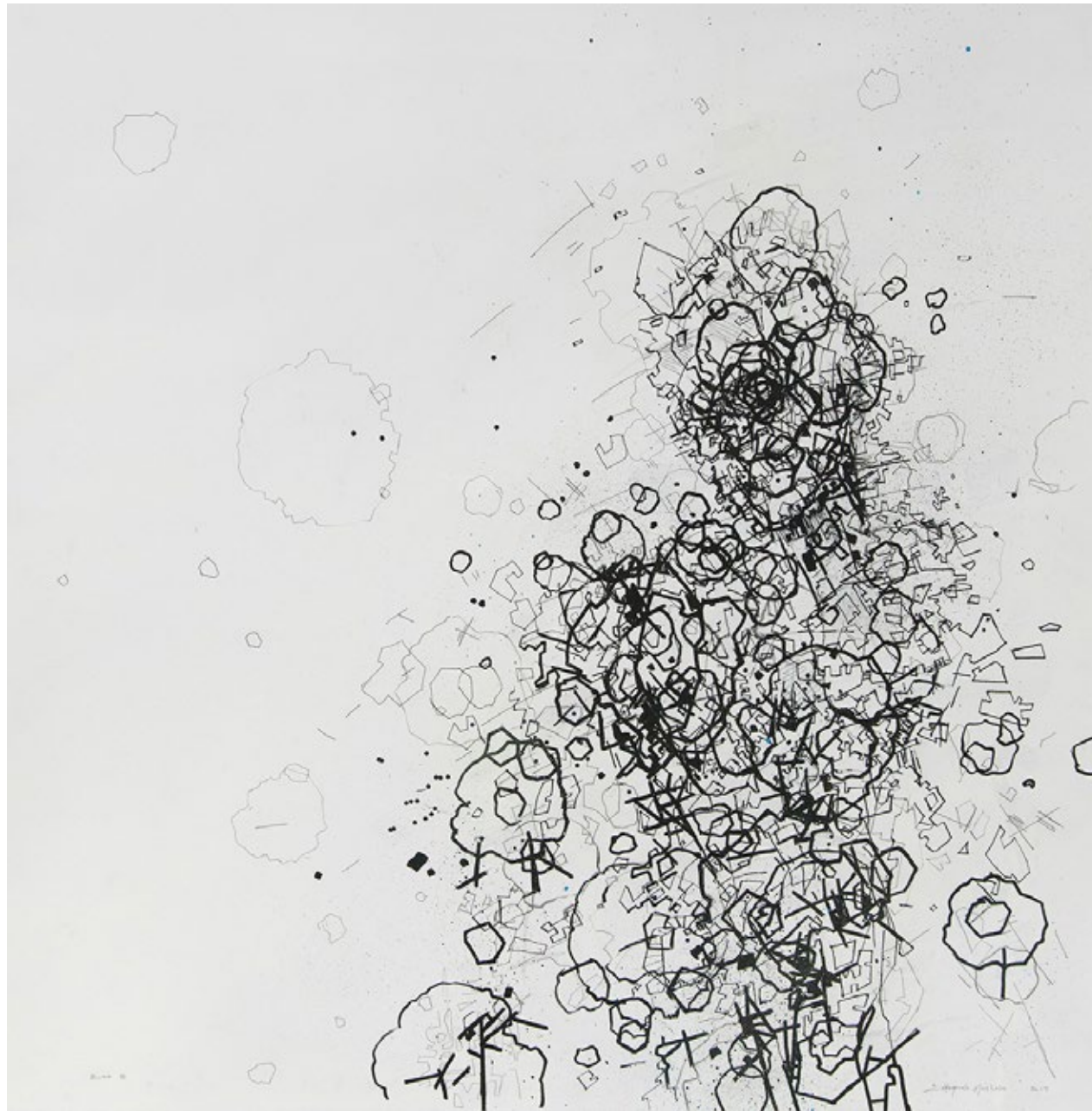


Origins IV invert | Silkscreen | 100 x 70 cm | Edition of 16 | R 11 025 (Framed)



Veins study III | Silkscreen | 100 x 70 cm | Edition of 16 | R 11 025 (Framed)





Bust II | Mix media drawing | 80 x 80 cm | R 39 000 (Framed)





Bust IV | Mix media drawing | 80 x 80 cm | R 39 000 (Framed)



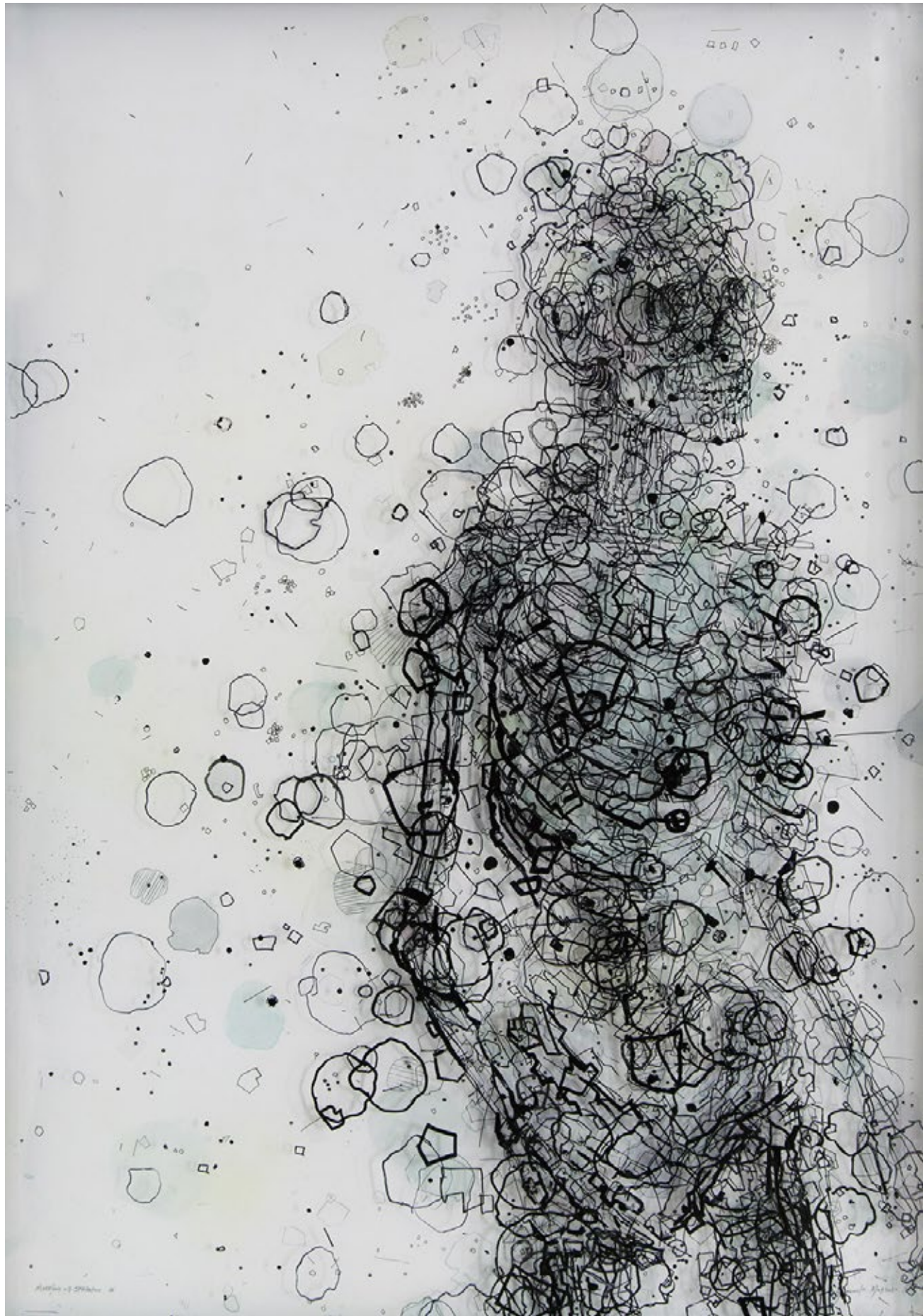
Bust I | Mix media drawing | 80 x 80 cm | R 39 000 (Framed)





Mapping of Skeleton I | Layered drawing on Perspex and paper  
100 x 70 cm | R 41 420 (Framed)





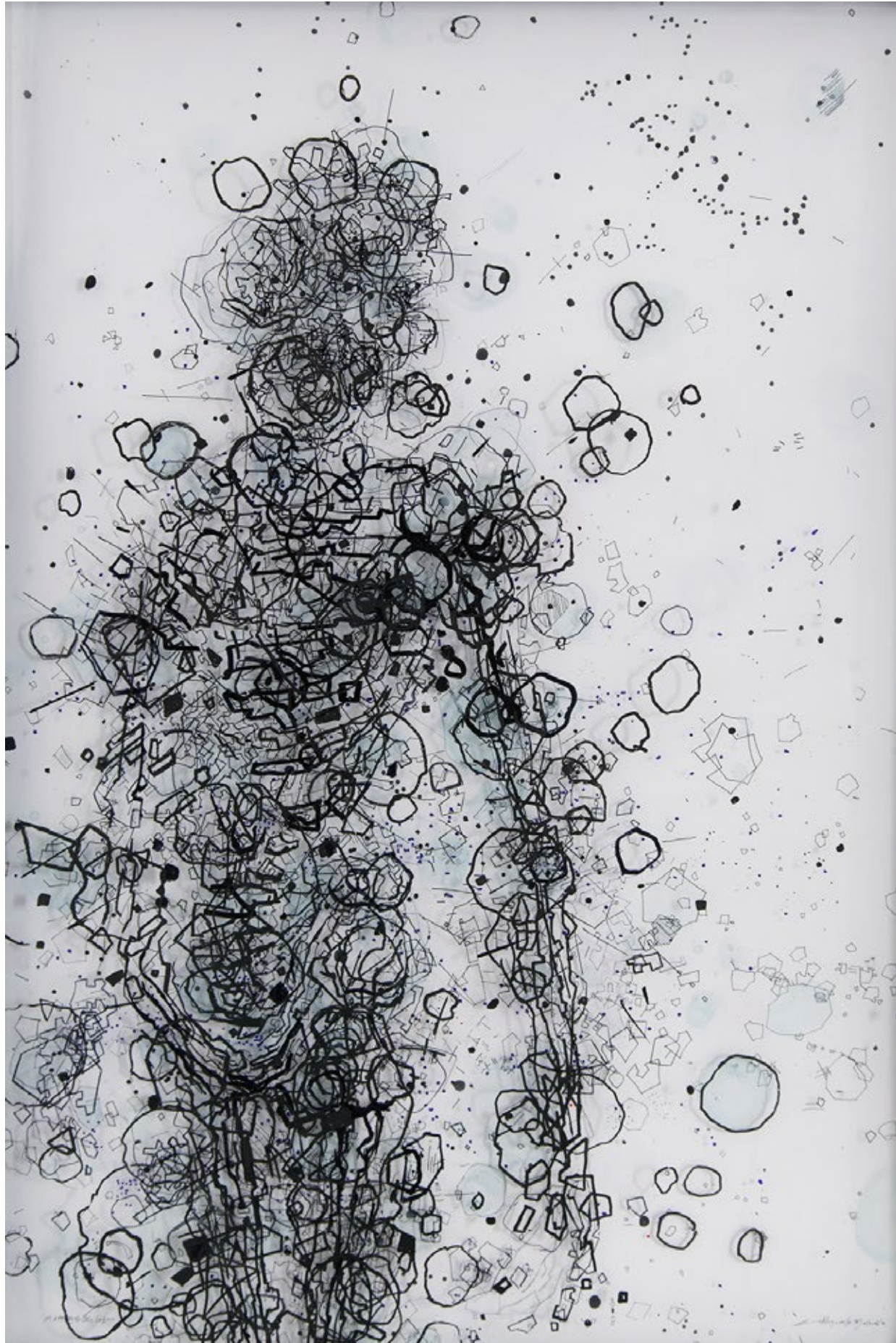
Mapping of Skeleton IV | Layered drawing on Perspex and paper  
100 x 70 cm | R 41 420 (Framed)





Mapping of Skeleton III | Layered drawing on Perspex and paper  
100 x 70 cm | R 41 420 (Framed)



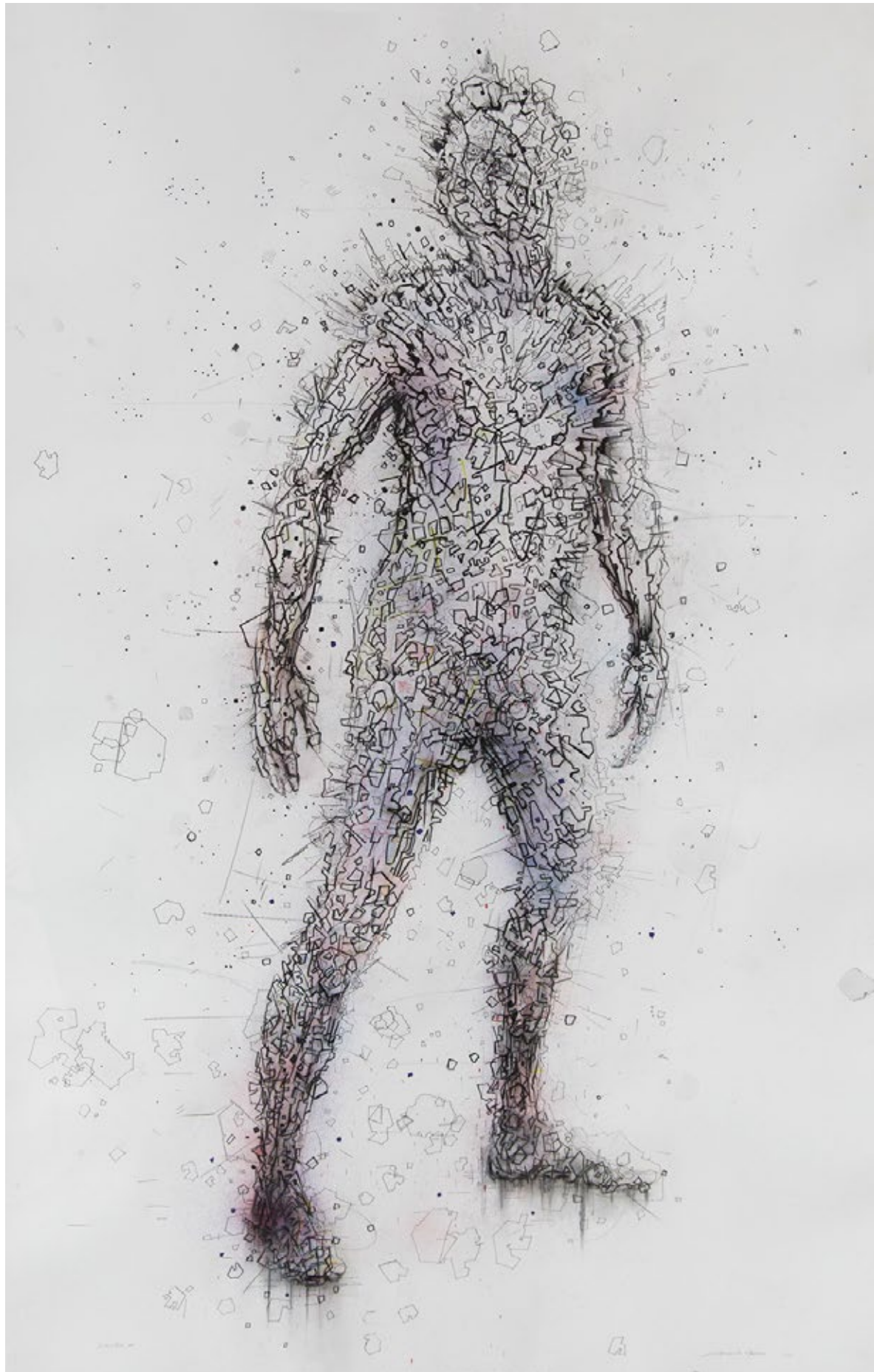


Mapping of Skeleton II | Layered drawing on Perspex and paper  
100 x 70 cm | R 41 420 (Framed)





Dis/Integrate VI | Paper cut-out | 150 x 108 cm | R 55 860 (Framed)



Integration XI | Mix media drawing | 170 x 108 cm | R 53 000 (Framed)





Integration X | Mix media drawing | 170 x 108 cm | R 53 000 (Framed)



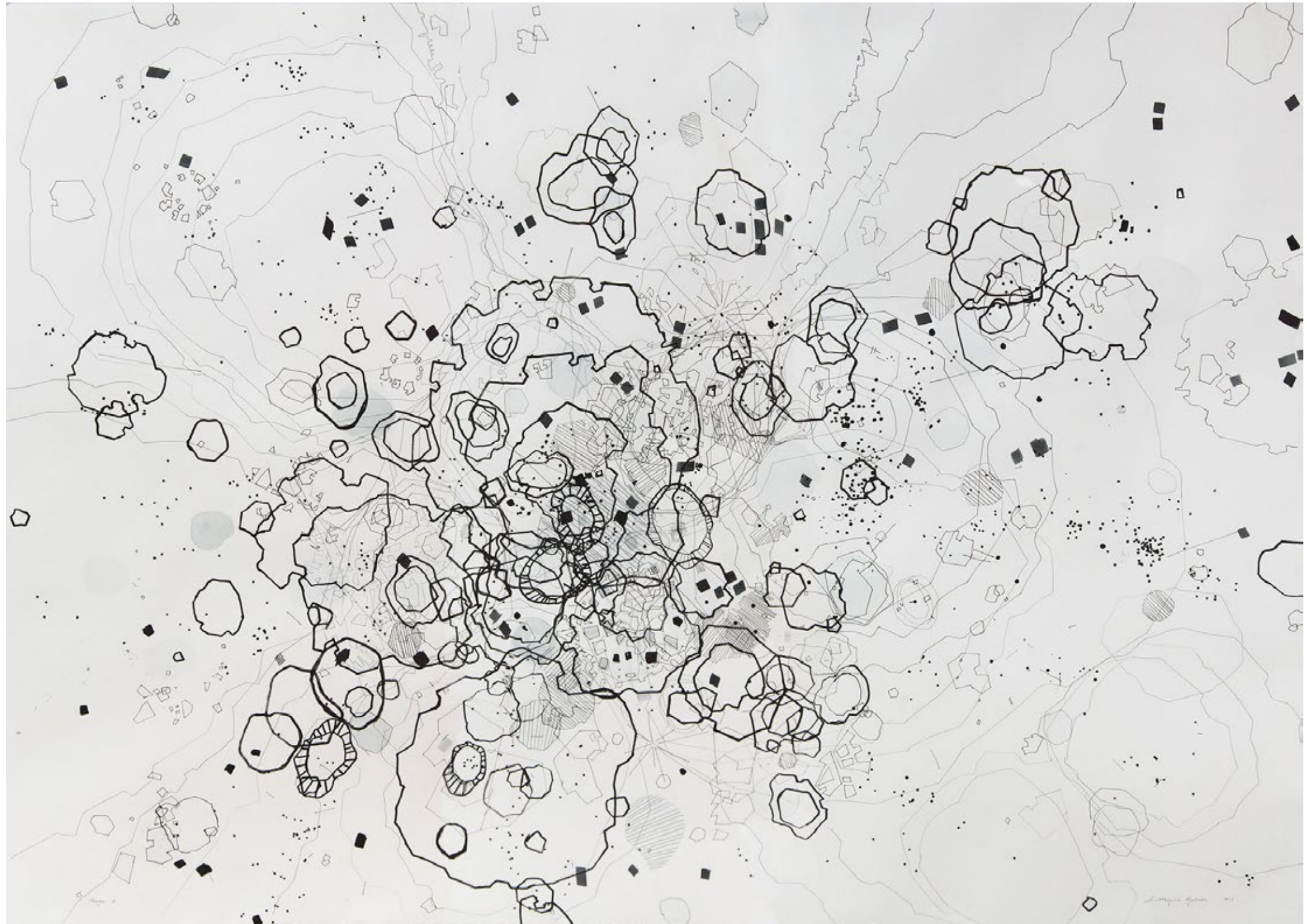
Integration VI | Mix media drawing | 170 x 108 cm | R 53 000 (Framed)





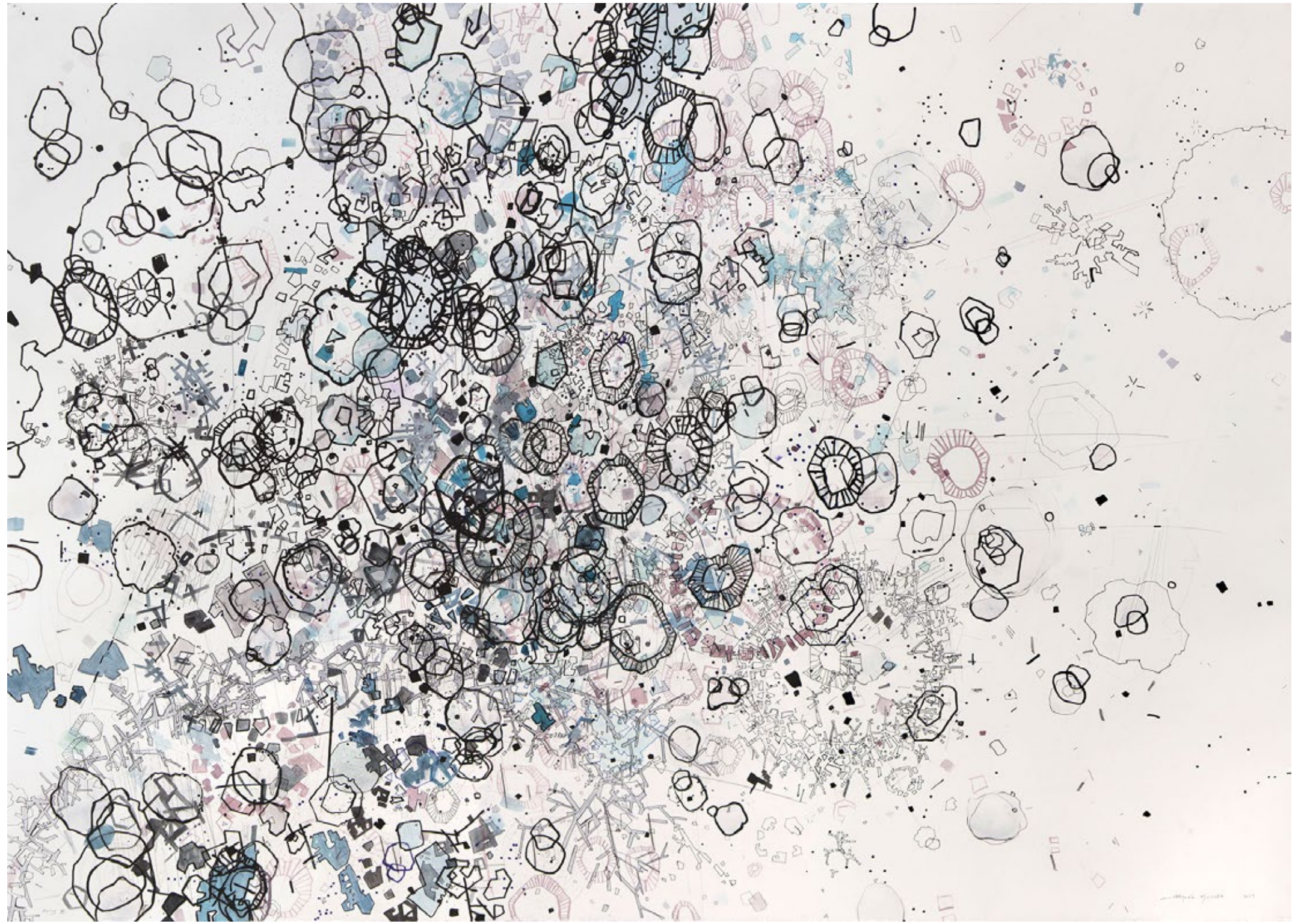
Dis/Integrate VIII | Paper cut-out | 150 x 108 cm | R 55 860 (Framed)





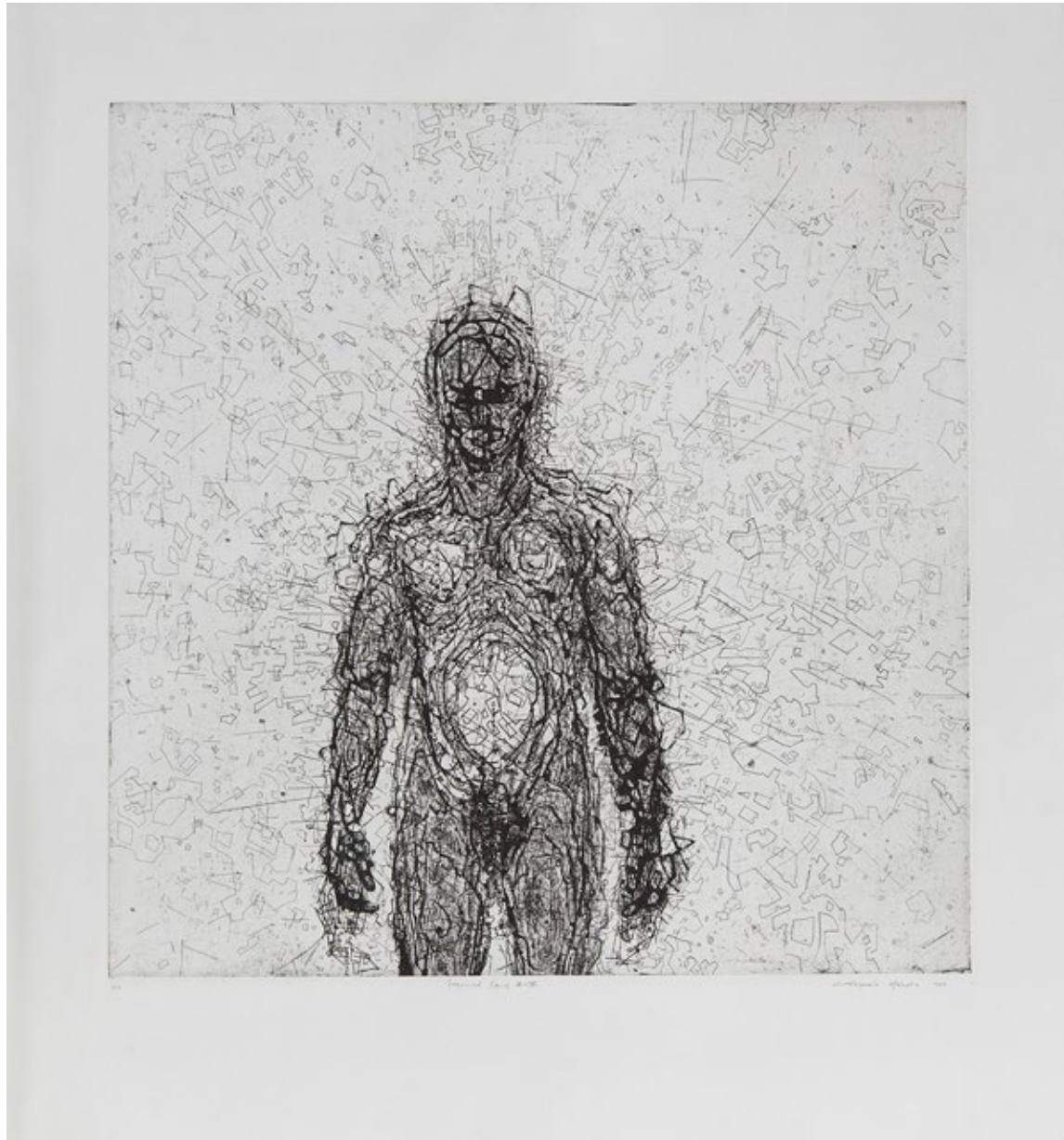
Merge I | Mix media drawing | 108 x 150 cm | R 48 000 (Framed)





Merge III | Mix media drawing | 108 x 150 cm | R 48 000 (Framed)





Fragmented figure IV | Etching | 63 x 68 cm | Edition of 16 | R 11 025 (Framed)



Fragmented figure II | Etching | 63 x 68 cm | Edition of 16 | R 11 025 (Framed)





Fragmented figure I | Etching | 63 x 68 cm | Edition of 16 | R 11 025 (Framed)

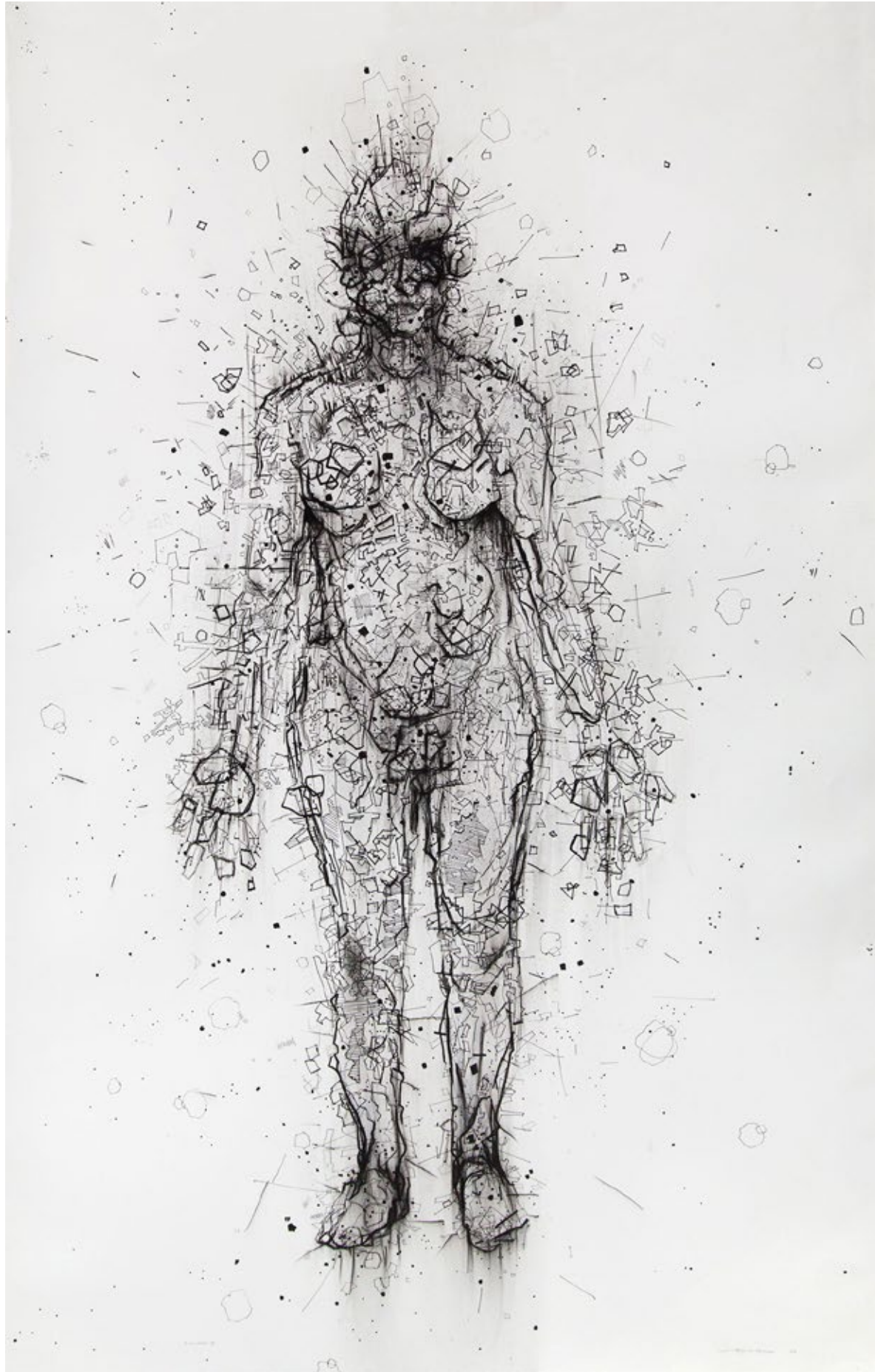


Homage to the word I | Paper cut-out | 53 x 55 cm | R 22 000 (Framed)



Homage to the word II | Paper cut-out | 53 x 55 cm | R 22 000 (Framed)





Merge I | Mix media drawing | 150 x 108 cm | R 48 000 (Framed)





Cell mechanism I | Mix media drawing | 60 x 140 cm | R 35 000 (Framed)





Cell mechanism II | Mix media drawing | 60 x 140 cm | R 35 000 (Framed)





Cell mechanism III | Mix media drawing | 60 x 140 cm | R 35 000 (Framed)



# CONTACT US

011 880 8802 | [info@lizamore.co.za](mailto:info@lizamore.co.za)  
155 Jan Smuts Avenue, Parkwood, 2193

Photography by JP Hanekom

LIZAMORE  
& Associates

