



Zolile Phetsane
Anton Burger

*Neon
Paradise*

Zolile Phetshane

Zolile Phetshane explores with his new body of work the concept of time, and with an array of bold colours, he draws influence from the city around him.

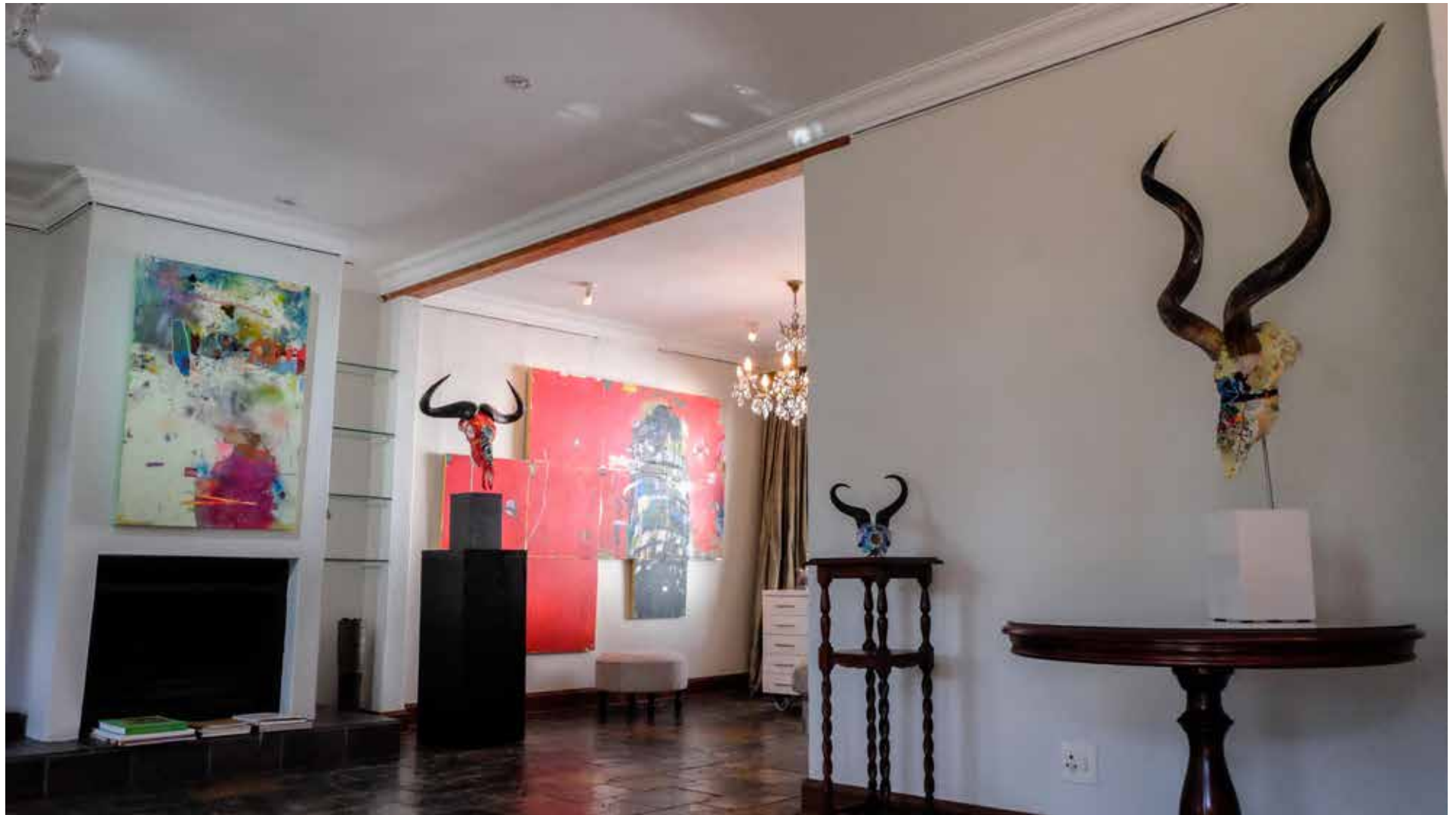
"This body of work is the continuation of my concept of calculation and numeracy and the spaces we occupy that is informed by size or number; I too am inspired by the life span of a butterfly.

Ponte City is a perfect case study in terms of the calculation of materials used to build a structure; it forms part of the Johannesburg landscape and has become a national landmark.

Numbers have always been intertwined with life and our surroundings and numbers informs us of what we see consciously and sub-consciously. It forms part of our every-day life and of our existence."

Zolile Phetshane, born in 1973, obtained an Advanced Diploma in fine arts at the University of Witwatersrand in 2006. He later joined the Artist Proof Studio in Johannesburg where he studied printmaking. Throughout his career, Phetshane has explored contemporary topics such as religion, politics, consumerism and capitalism. He explores the intricacies of these themes through a combination of abstract colour fields and figurative elements and symbols, and sometimes collage. He works in a variety of mediums ranging from printmaking, pastel and oil pastel on paper, and acrylic and oil on canvas.

Lizamore & Associates has been working with the artist since 2008 and has developed a close partnership with the artist. Phetshane has been represented by the gallery at many of the national fairs such as the FNB Joburg Art Fair, Investec Cape Town Art Fair and the RMB Turbine Art Fair. He too has been represented on many solo and group exhibitions at Lizamore & Associates. One of the highlights of his career has been an exhibition of his works at the North West University Gallery in 2014. His work is sought after and his name has become synonymous with the African abstraction field. His work can be found in many public and private collections nationally.



Blue Cocoon - Butterfly series
2019
Mixed media on Belgian linen
120cm x 80cm
R 38 000-00





Beauty and Fragility of a Butterfly - Butterfly series
2019
Mixed media on Belgian linen
80cm x 120cm
R38 000-00

Scientific Power - Butterfly series
2019
Mixed media on Belgian linen
120cm x 80cm
R 38 000-00





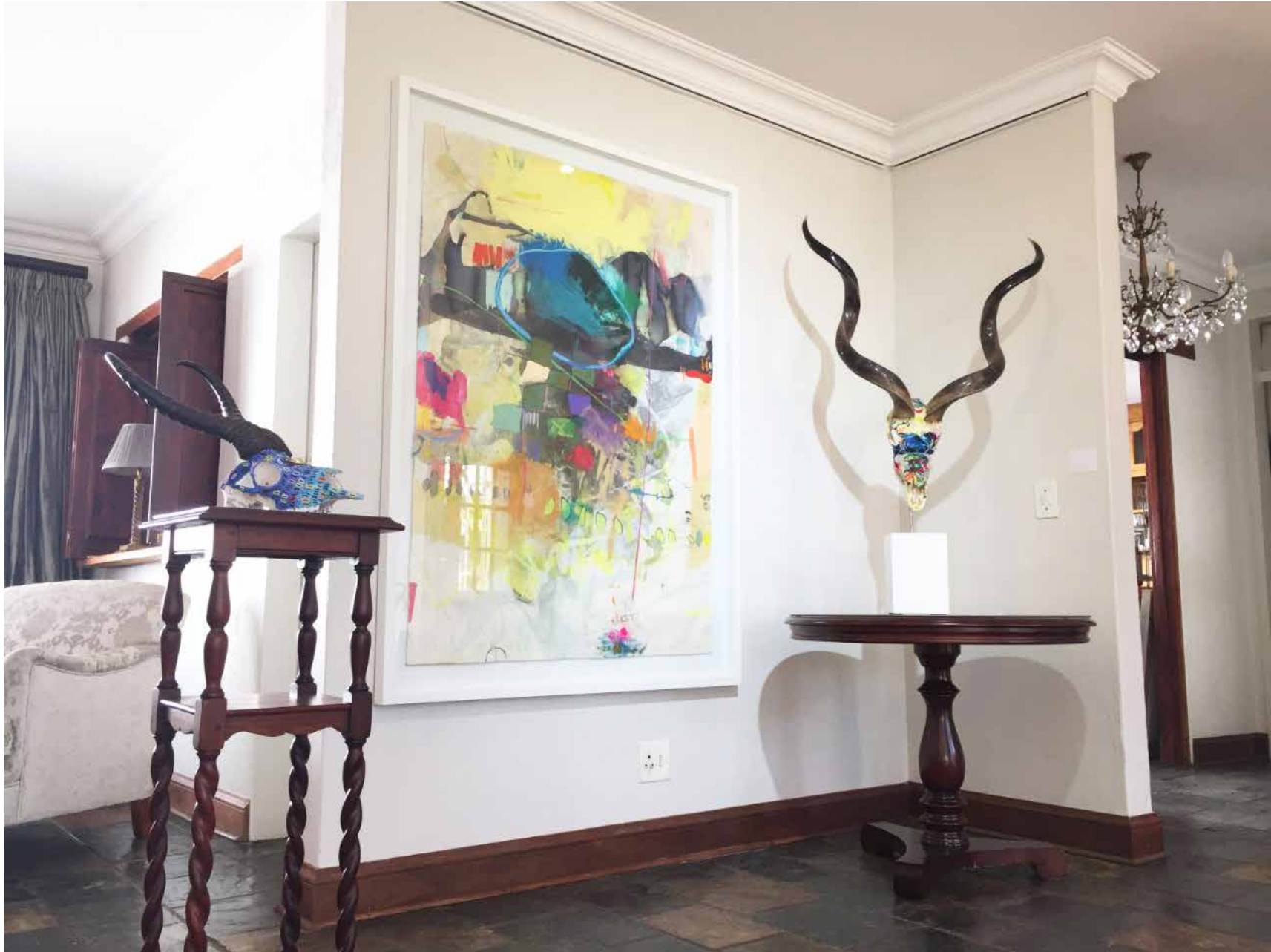
Power in Process - Butterfly series
2019
Mixed media on Belgian linen
80cm x 120cm
R38 000-00



Inbetween a Worm and Butterfly - Butterfly series
2019
Mixed media on Belgian linen
80cm x 120cm
R38 000-00



Magical Cocoon - Butterfly series
2019
Mixed media on Arches paper (300g)
175cm x 125cm (framed)
R 50 000-00





Ponte City Puzzle
2019
Mixed media on canvas (9 panels)
180cm x 240cm
R 78 000-00



Detail

Ponte City 2 - Mirror
2019
Mixed media on mirror
37cm x 53cm (framed)
R 7 000-00



On The Rock
2020
Mixed media on paper
38.5cm x 53cm (framed)
R 7 500-00



Back To The City
2020
Mixed media on paper
38.5cm x 53cm (framed)
R 7 500-00



Transformed - Butterfly series
2020
Mixed media on paper
50cm x 35cm (framed)
R 7 500-00



Zoned
2020
Mixed media on paper
42cm x 58cm (framed)
R 8 500-00



Uncontainable
2020
Mixed media on Belgian linen
140cm x 140cm
R 47 000-00



Anton Burger

"The idea of interpreting Zolile's abstract two-dimensional works using beads on skulls was very exciting. I respect him as an artist and although very challenging, I do believe that I have achieved what we set out to do. These three-dimensional artworks of mine reflect and embody the work of Phetshane".

Burger travels South Africa and after seeing the beadwork of especially the Ndebeles, he became interested in experimenting with beads on skulls, which he sourced from street vendors near Bela Bela in the Bushveld. These skulls and bones are collected from animals that naturally die in the bushveld. All skulls are cleaned by taxidermists before he proceeds with the beading. The beading is painstakingly done by applying the beads one-by-one, with glue, onto the objects. He uses mainly very small imported Miyuki glass beads, which enables him to do subtle shading and intricate designs. Depending on the size of the object, it takes between 40 and 120 hours to complete a single work.

Although new in the market, the artist has participated in a few exhibitions nationally and his works has sold to collectors in South Africa, UK and USA.

Burger matriculated at the Menlo Park High School in Pretoria, where art was one of his subjects. He obtained the degrees BA (Law) and LLB at the University of Stellenbosch. After his studies, he lived in Cape Town, where he owned an art gallery in Longmarket Street. He has always had and maintained his keen interest in art, and with his partner, has an extensive art collection. He is a practising Attorney, now based in Craighall, Johannesburg.



Detail

Blouwildebeest 1
(interpretation of Zolile Phetsane's Ponte City Puzzle)
2020
Beads with glue
60 cm (chin to top of horns) x 65 cm (between horns)
x 17 cm (front to back)
Height with plinth included 95 cm
R47 950-00 (inclusive of plinth)





Detail

Kudu 1

(interpretation of Zolile Phetsane's Magical Cocoon)

2020

Beads and glue

95 cm (chin to top of horn) x 80 cm (between horns) x 22 cm (front to back)

Height with plinth included 99.3 cm

R38 350.00 (inclusive of plinth)



Springbok

(interpretation of Zolile Phetsane's Power in Process)

2020

Beads and glue

46 cm (chin to top of horns) x 25 cm (between horns)

x 18 cm (front to back)

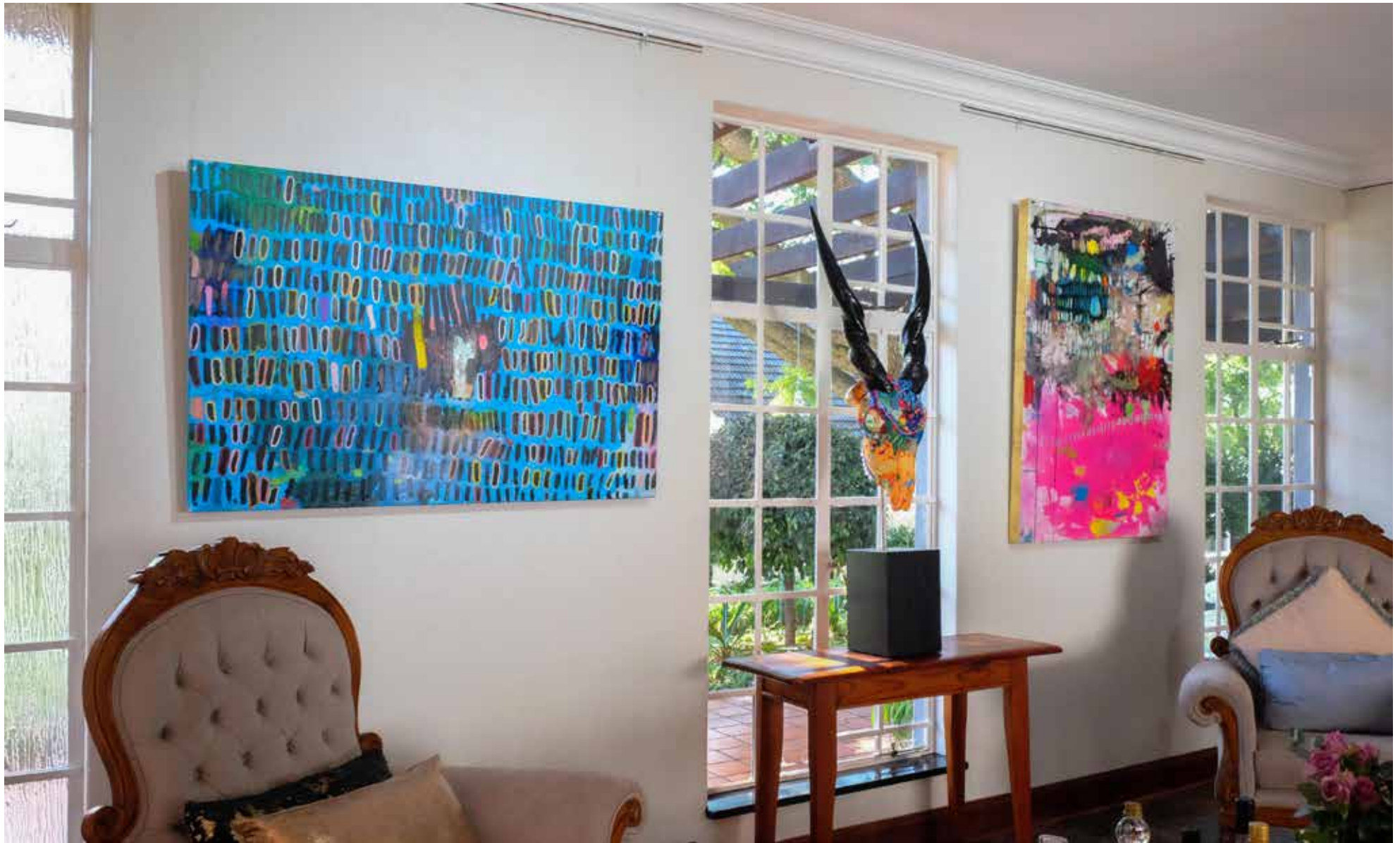
R9 600-00



Detail



Lockdown Eland
(interpretation of a untitled Zolile Phetsane work)
2020
Beads and glue
95 cm (chin to top of horns) x 38 cm (between horns)
x 20 cm (front to back)
Height with plinth included 134 cm
R52 950-00



LIZAMORE

& Associates

CONTEMPORARY ART GALLERY AND CONSULTANCY

3 Hetty Avenue, Fairland, 2195

For further info:

Teresa Lizamore - 082 651 4702/teresa@lizamore.co.za
Marnus Strydom - 079 506 5798/marnus@lizamore.co.za