

**OF
COLOUR
AND
OF
FORM**

**BEVAN DE WET
+ GREGG PRICE**

15.07.23 – 17.08.23

LIZAMORE
& Associates

**THE FIRESTATION
16 BAKER STREET
ROSEBANK
JHB**

Of Colour And Of Form is a two person exhibition featuring the works of **Bevan de Wet** and **Gregg Price**.

Together they explore the most basic but most essential components of making visual art, colour and form, and brings attention to the conceptual side of these very tangible elements. This encapsulates the repetitive and cyclical character of nature itself and brings attention to how we occupy and interact with our natural world.

These artists share a common motivation of construction and deconstruction.

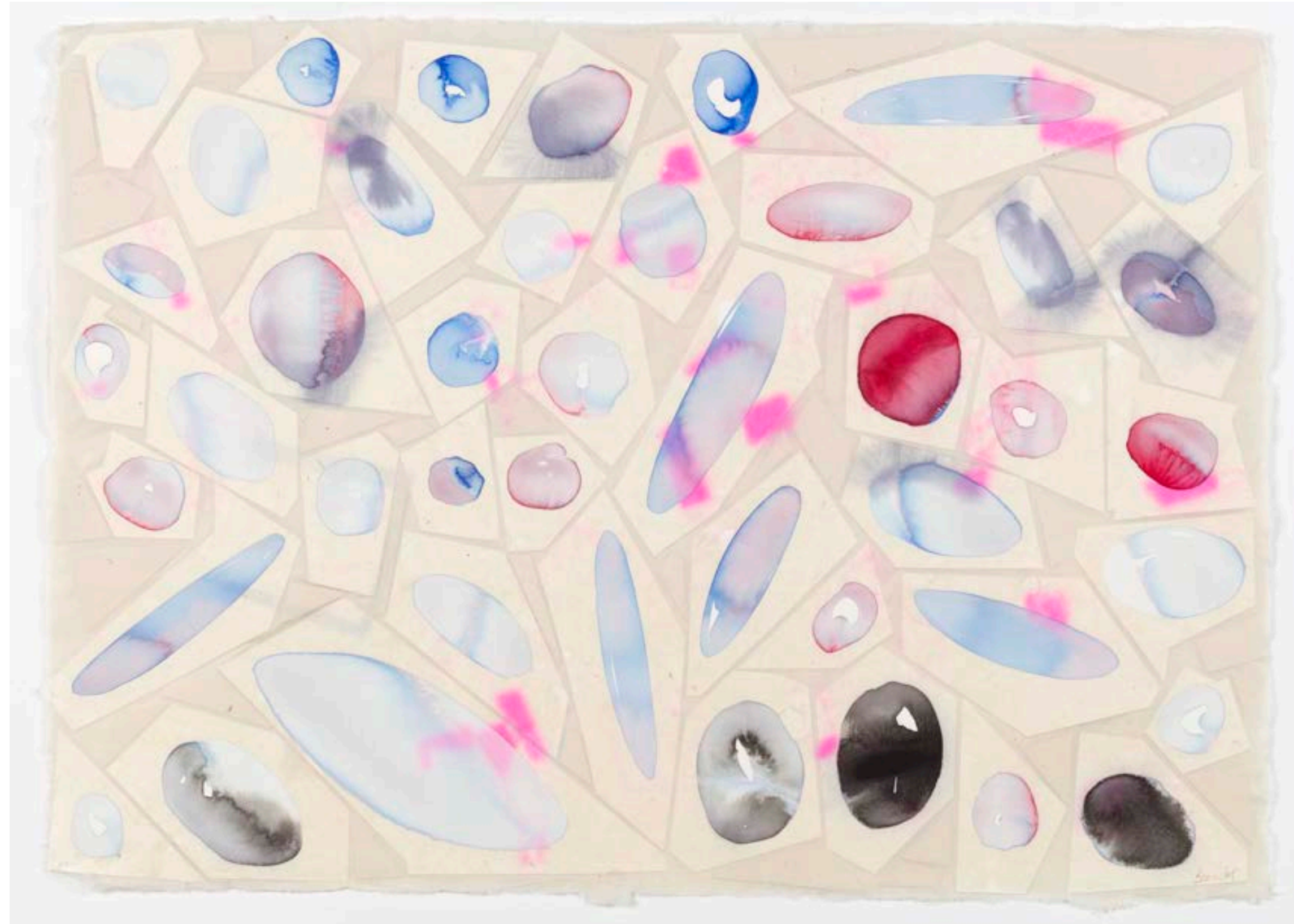
Bevan de Wet

Bevan de Wet's practice centres around our increased sense of alienation from the natural environment and the spaces we inhabit, drawing attention to the fragmented nature of our current engagement with the world through digital interfaces. Concerns around space and how we occupy it, has lead to a fascination with boundaries, whether biological, geographical and virtual, and how these boundaries are permeable and shifting.

He explores the tensions between the organic and the constructed world, from the intricate networks below the earth's surface, to the imposing structures that shape our landscape; systems of order in a world that is complex and chaotic.

In this exhibition, *Of Colour And Of Form*, de Wet uses elements of fragmented prints, cropped off margins, and other studio detritus as a departure point to create a series of collages and paper works. Deconstructed shapes are embedded into the handmade paper, exploring the delicately entwined relationship between printmaking and papermaking.

*Handmade paper works made in collaboration with Phumani Archive Paper Mill, assisted by Dumisani Dlamini.



Strata XIII

2022

Handmade paper with embedded collage
67cm x 92cm (framed)

R 19 800-00



Refracted XI

2020

Handmade paper with embedded collage
66cm x 49cm (framed)

R 12 700-00



Refracted XII

2020

Handmade paper with embedded collage
66cm x 49cm (framed)

R 12 700-00

Cascade II

2020

Handmade paper with embedded collage
66cm x 49cm (framed)

R 12 700-00





Floating (Detritus I)

2022

Handmade paper with embedded collage

92cm x 67cm (framed)

R 19 800-00



Floating (Detritus II)

2022

Handmade paper with embedded collage

92cm x 67cm (framed)

R 19 800-00



Formless I

2022

Handmade paper with pencil and collage
66cm x 49cm (framed)

R 12 700-00

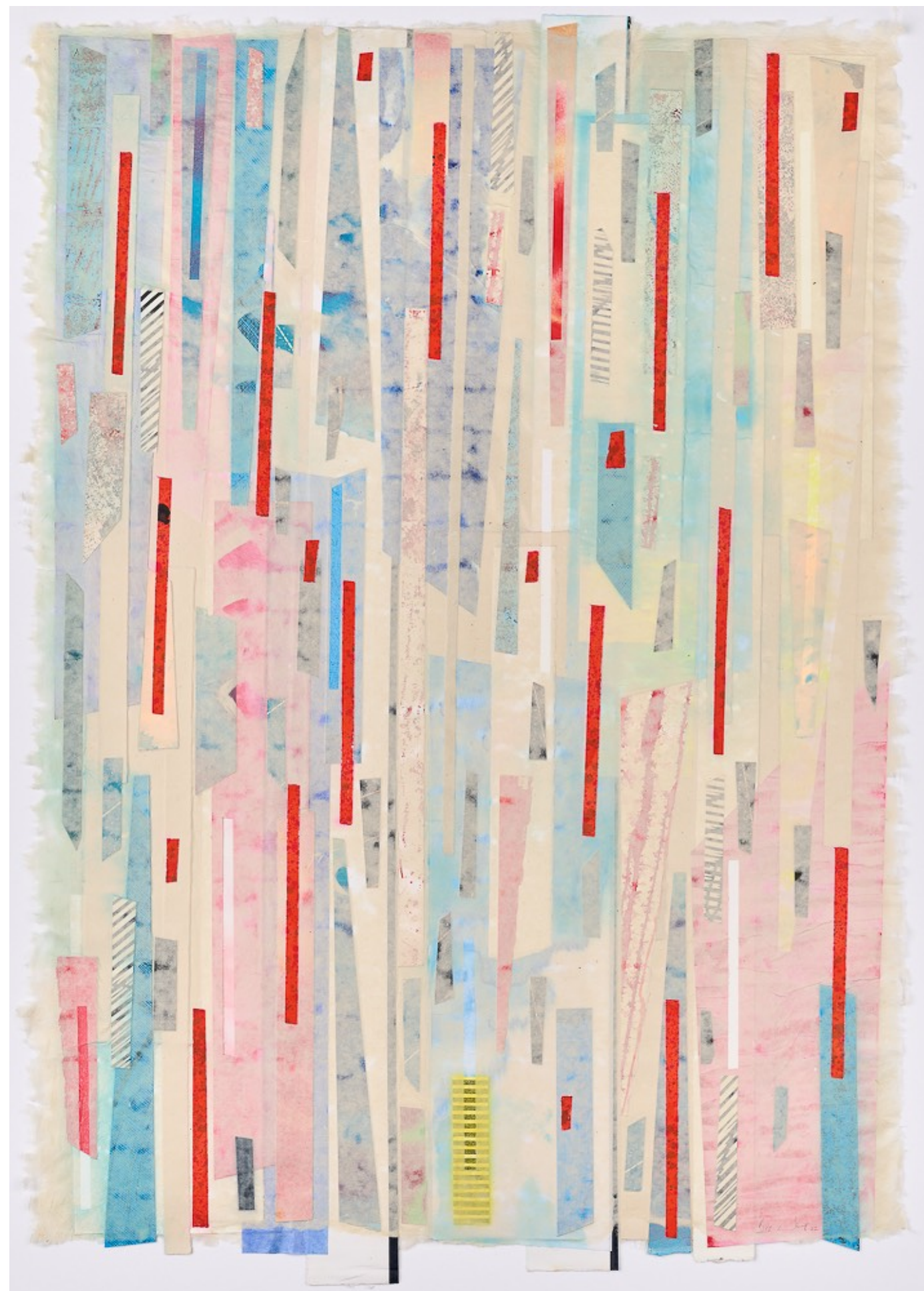


Formless II

2022

Handmade paper with pencil and collage
66cm x 49cm (framed)

R 12 700-00



Strata I

2022

Handmade paper with embedded collage
96cm x 68cm (framed)

R 19 800-00

Strata II

2022

Handmade paper with embedded collage
96cm x 68cm (framed)

R 19 800-00





Strata III

2022

Handmade paper with embedded collage
96cm x 68cm (framed)

R 19 800-00



Strata IV

2022

Handmade paper with embedded collage
96cm x 68cm (framed)

R 19 800-00



Strata VII

2022

Handmade paper with embedded collage
84cm x 60cm (unframed)

R 16 100-00



Strata VIII

2022

Handmade paper with embedded collage
84cm x 60cm (unframed)

R 16 100-00

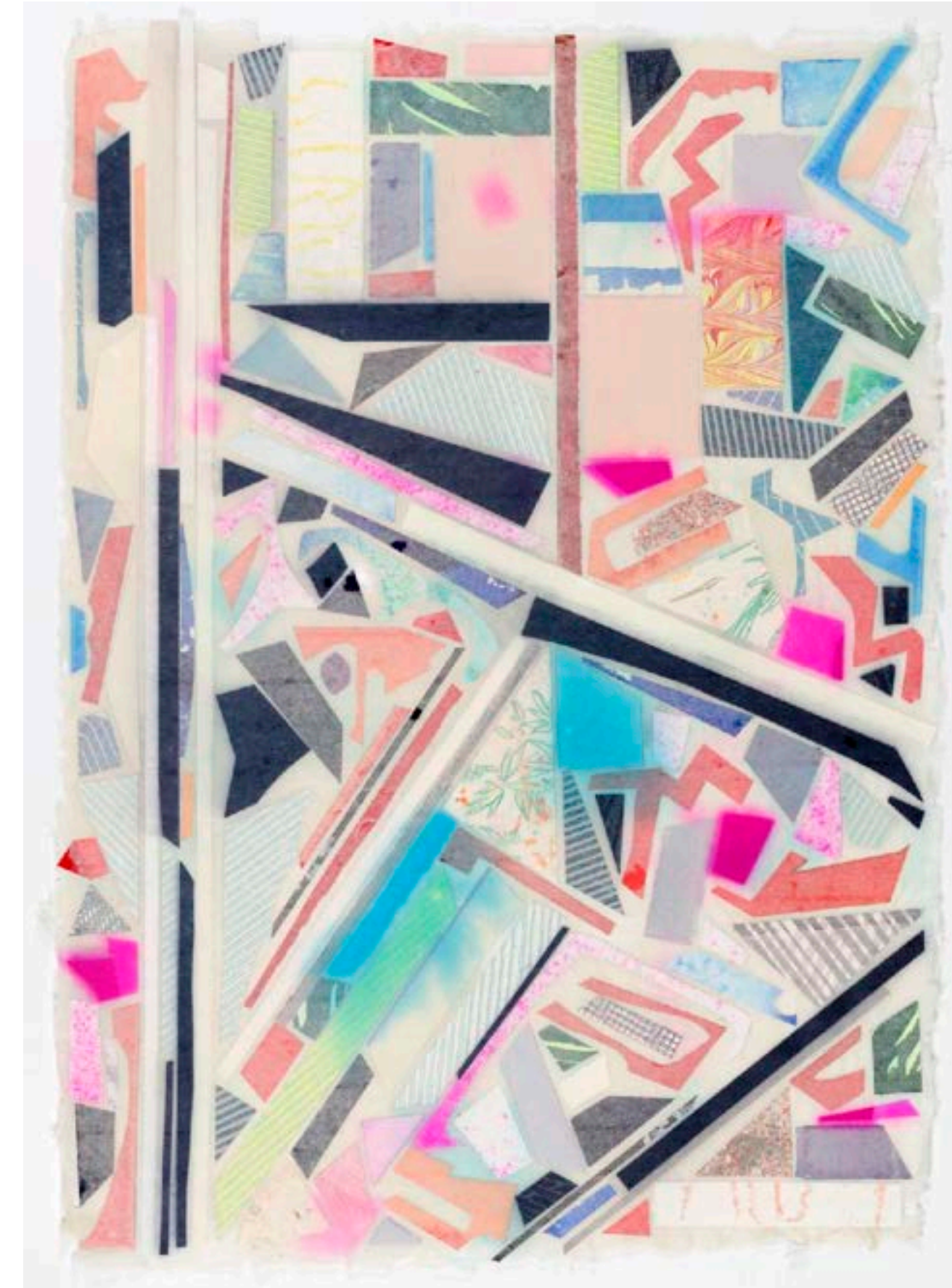


Floating (Detritus III)

2022

Handmade paper with embedded collage
92cm x 67cm (framed)

R 19 800-00



Floating (Detritus IV)

2022

Handmade paper with embedded collage
92cm x 67cm (framed)

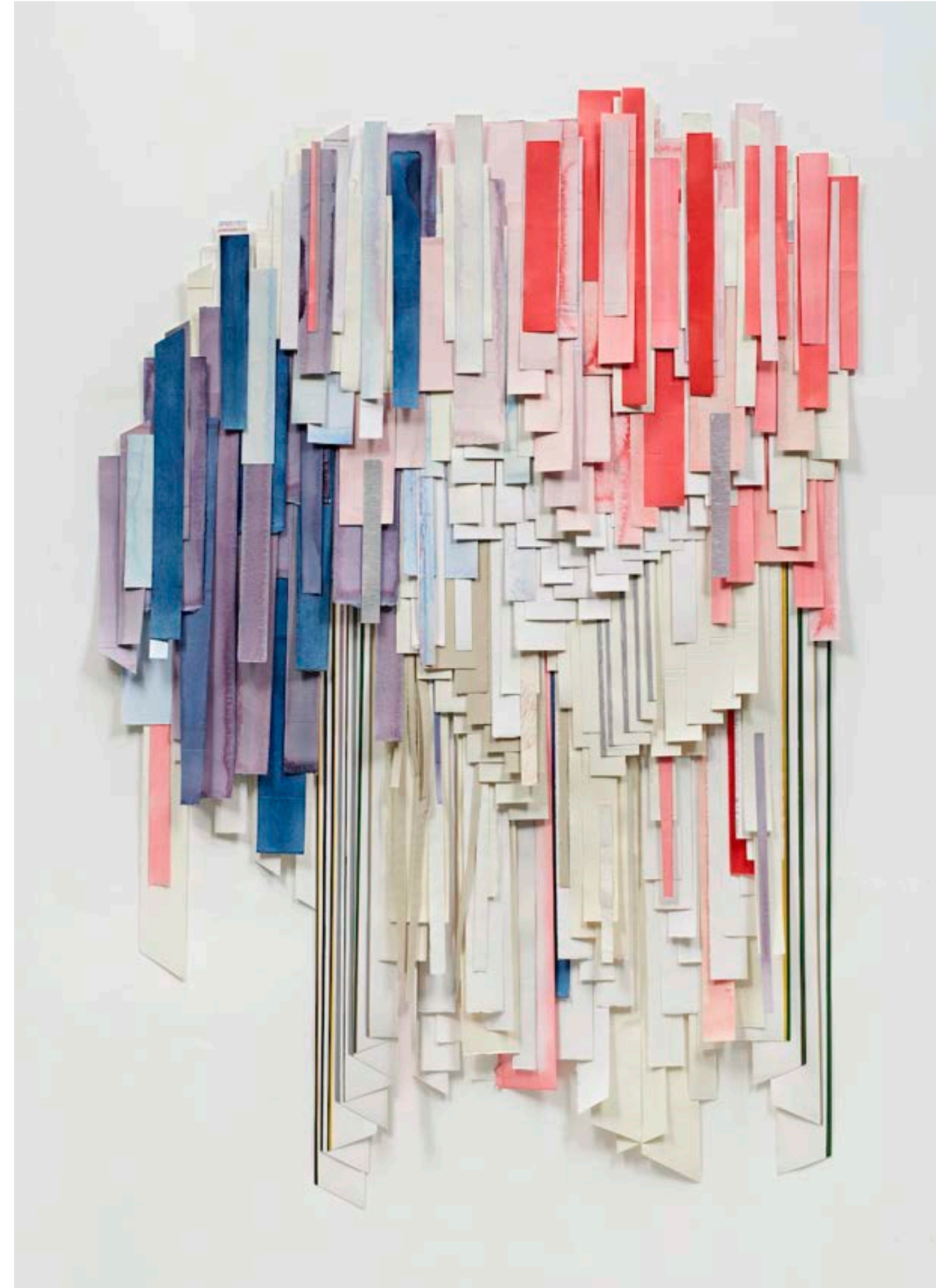
R 19 800-00

Coda/Codex IX

2023

Paper Sculpture and Collage, wooden backing
147cm x 111cm (framed)

R 46 000-00





Coda/Codex VII

2023

Paper Sculpture and Collage, wooden backing
212cm x 97cm (framed)

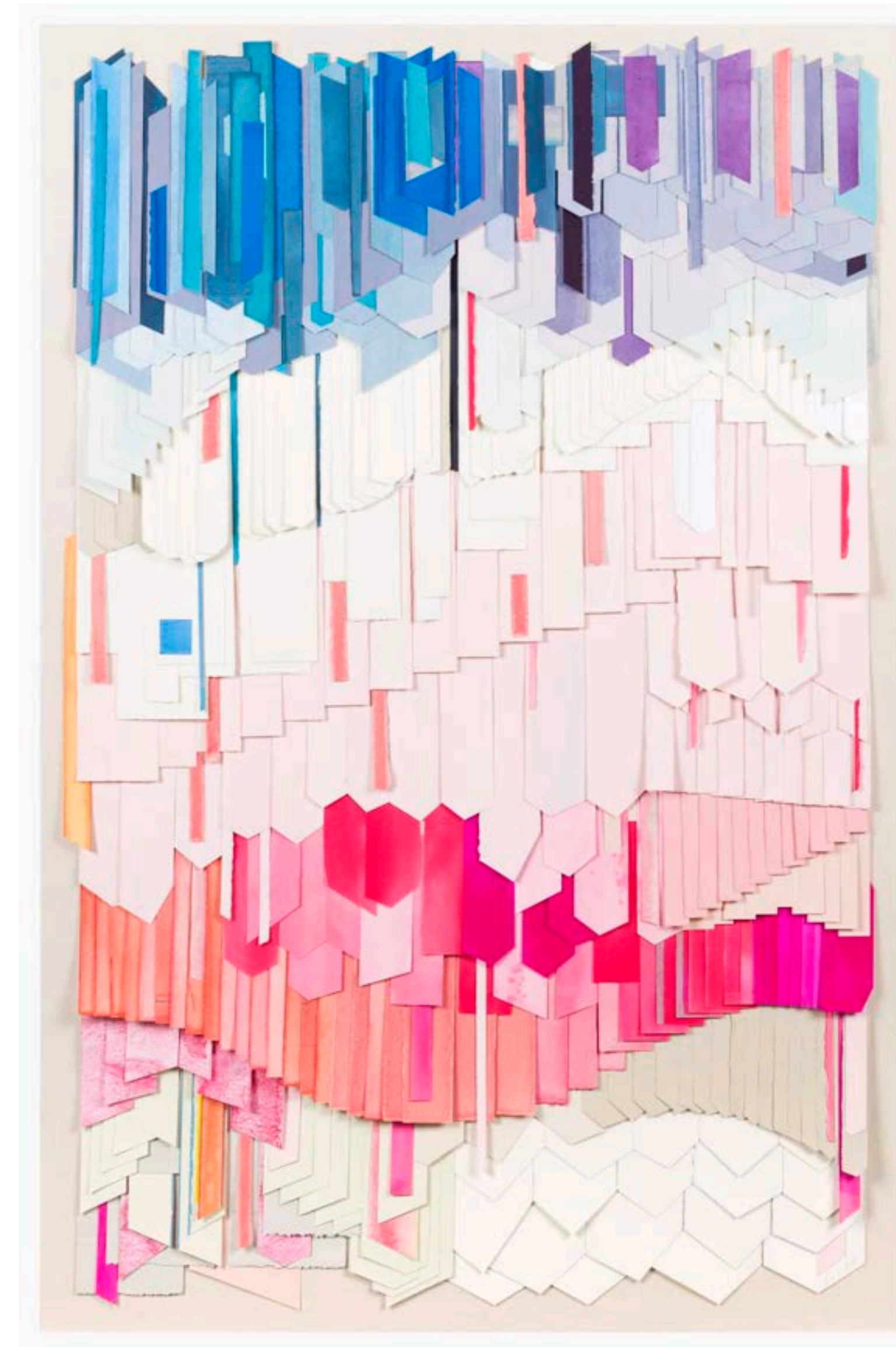
R 48 300-00

Coda/Codex XI

2023

Paper Sculpture and Collage, wooden backing
120cm x 80cm (unframed)

R 28 750-00





Coda/Codex XII

2023

Paper Sculpture and Collage, wooden backing
120cm x 80cm (unframed)

R 28 750-00

Coda/Codex XIII

2023

Paper Sculpture and Collage, wooden backing
120cm x 80cm (unframed)

R 28 750-00





Formless (Surface Tension I)

2023

Hemp pulp and watercolour
100cm x 80cm (unframed)

R 25 000-00

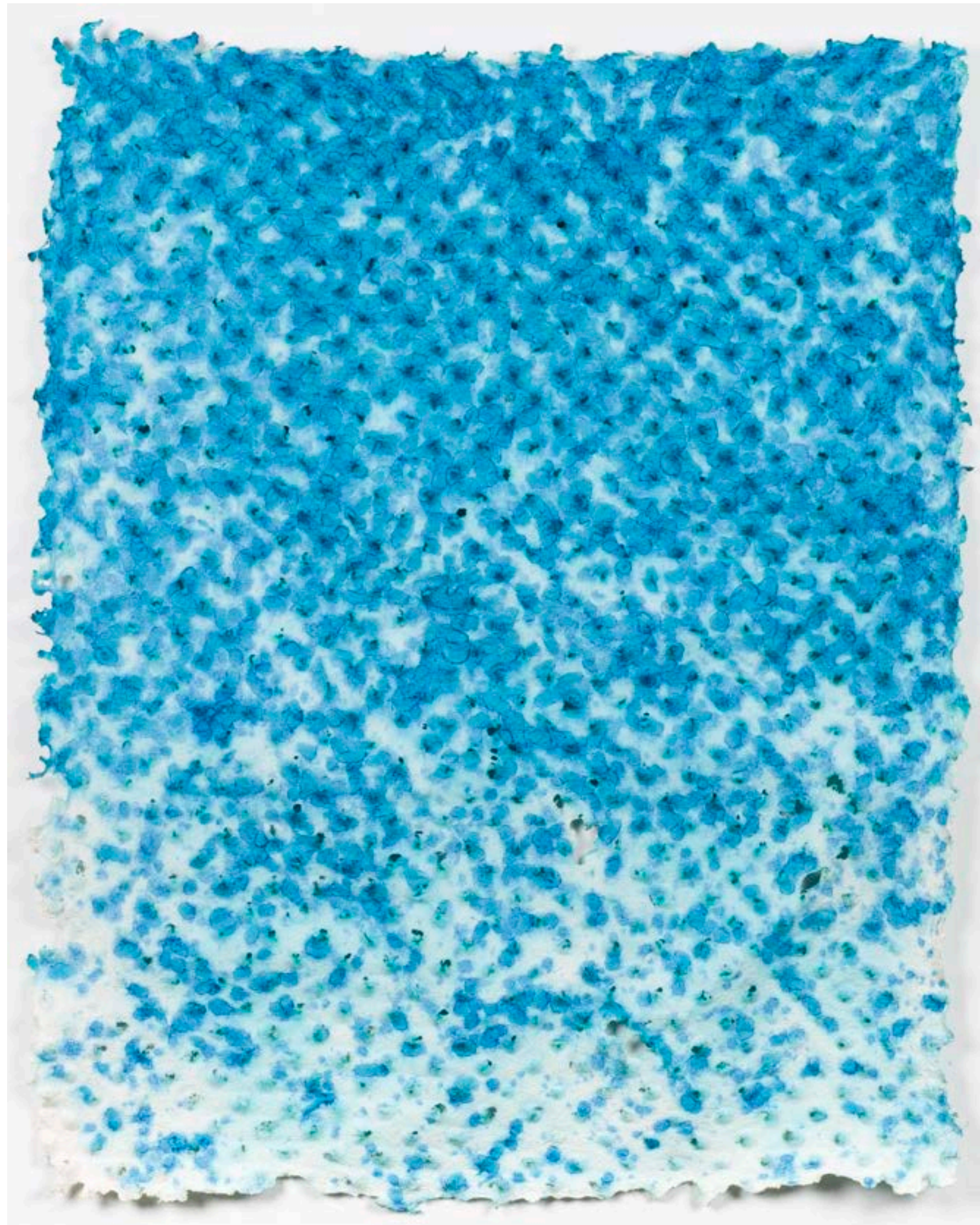
Formless (Surface Tension II)

2023

Hemp pulp and watercolour
103cm x 80cm (unframed)

R 25 000-00





Formless (Surface Tension III)

2023

Hemp pulp and watercolour
103cm x 80cm (unframed)

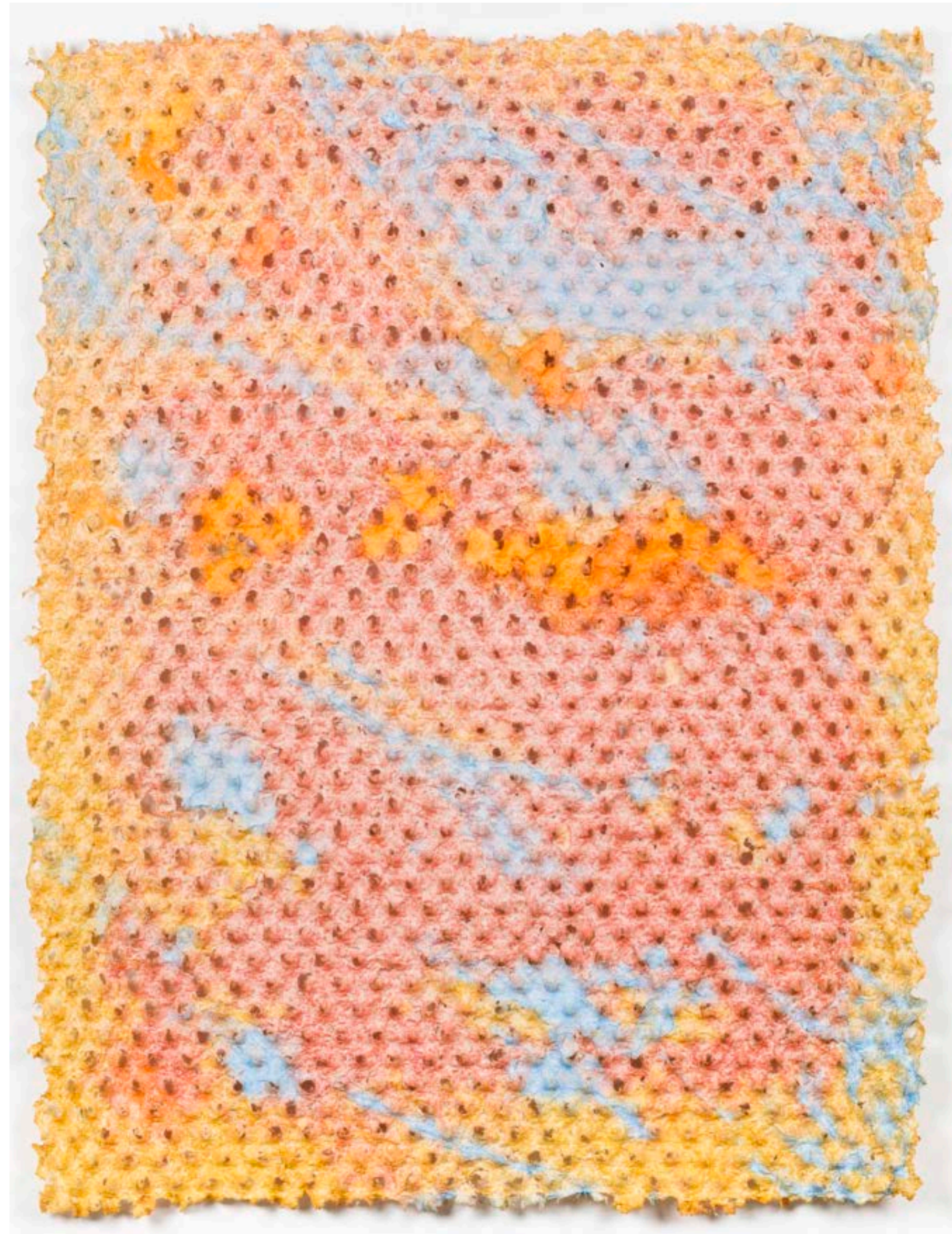
R 25 000-00

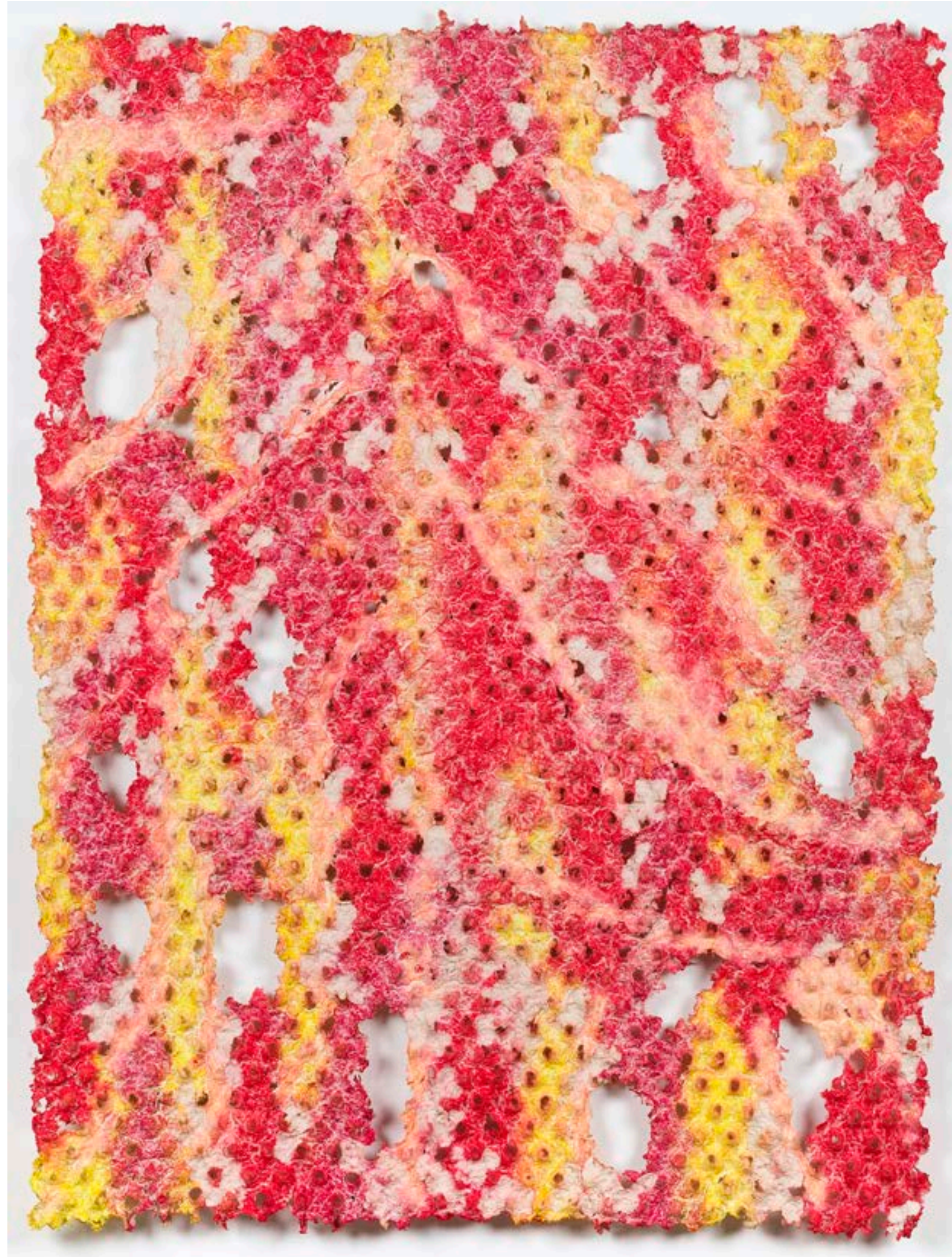
Formless (Surface Tension IV)

2023

Hemp and sisal pulp and watercolour
106cm x 80cm (unframed)

R 25 000-00





Formless (Surface Tension V)

2023

Hemp and sisal pulp and watercolour
106cm x 80cm (unframed)

R 25 000-00

Formless (Surface Tension VI)

2023

Hemp and sisal pulp and watercolour
100cm x 80cm (unframed)

R 25 000-00



Gregg Price

"When I began the work for this exhibition, I limited my choice of colour to a simple glaze that reminded me of stone or concrete. It had an ancient feel to it, as if an artefact from a distant civilisation had washed up in a river. The exclusion of colour in the larger vessels, brings an abstract quality and stillness to the forms. Inspiration has come from Butoh, a form of Japanese dance theatre, with a philosophy of finding the dance within.

The tea bowls have become a dynamic conversation with both colour and form. Each new bowl takes a little from the previous one and pushes ahead in the void. The colours relate to my experience of life at the coast. Simonstown has beautiful ocean coves and mountains and nature fills your senses with abundant possibilities.

I believe the tea bowls should draw you in, entice you to pick them up, explore the weight and texture, and to find pleasure in the colour."

Large ceramic vessels



A.
2023
Handmade ceramic vessel
53.5cm x 22cm

R 27 000-00

B.
2023
Handmade ceramic vessel
45.5cm x 21.5cm

R 23 000-00





C.
2023
Handmade ceramic vessel
56.5cm x 14.5cm

R 25 000-00

D.
2023
Handmade ceramic vessel
54.5cm x 20cm

R 25 000-00





E.
2023
Handmade ceramic vessel
60cm x 17.5cm

R 27 000-00

F.
2023
Handmade ceramic vessel
69cm x 17cm

R 32 000-00



Tea Bowls
Set A

Average size:
7cm (h)
8cm x 10cm (diameter)

R 1350-00

A1.



A2.



A3.



A4.



A5.



A6.



A7.



A8.



A9.



A10.



A11.



A12.



A13.



A14.



A15.



A16.



A17.



Tea Bowls
Set B

Average size:
7cm (h)
8cm x 10cm (diameter)

R 1700-00

B1.



B2.



B3.



B4.



B5.



B6.



B7.



B8.



B9.



B10.



B11.



B12.





B13.



B14.



B15.

Tea Bowls
Set C

Average size:
10cm (h)
12cm x 14cm (diameter)

R 2300-00



C1.



C2.



C3.



C4.

LIZAMMORRE
& Associates

CONTEMPORARY ART GALLERY AND CONSULTANCY